



Installation Status Report Natural Infrastructure ISR-NI

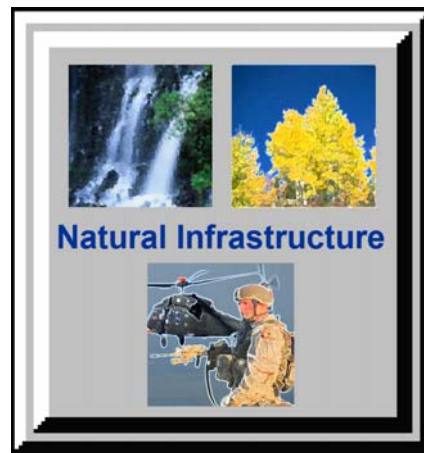
**Ms. Leslie Walrath
Office of the Director of Environmental Programs
Integration Division**

March 2007



Agenda

- Provide update on current & upcoming events
- Provide an understanding of “natural infrastructure”
- Provide an overview of ISR-NI
- Provide the “next steps” for implementation





Current & Upcoming Events

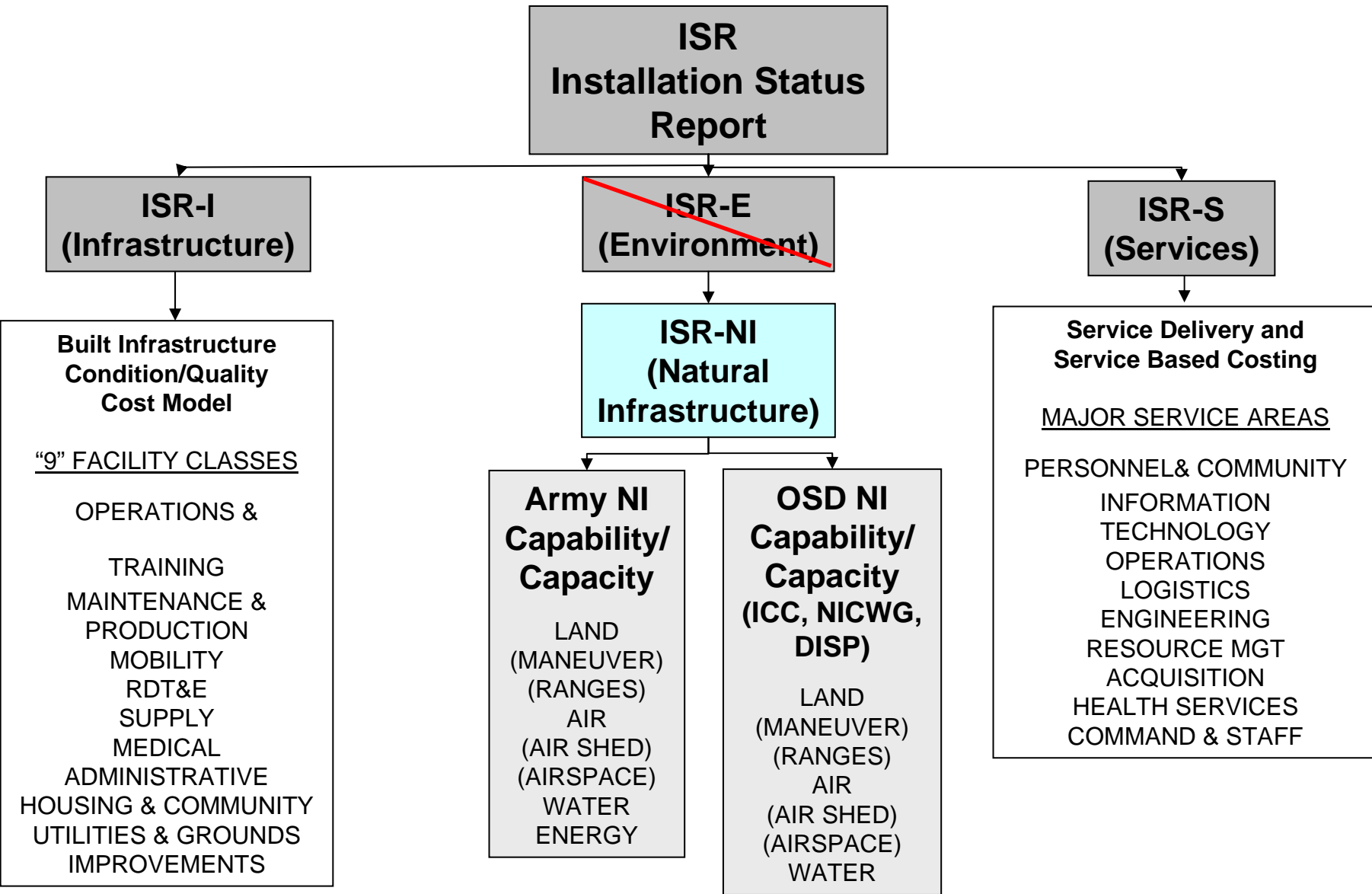
- ✓ ISR-NI AAR/establishment of ISR-NIWG 6-8 Nov 06
- ✓ Briefing to ACSIM, DACSIM 7 Dec 06
- ✓ IMI/ISR centralized training
 - 29 Mar 07 update to Mr. Sakowitz
 - Jun-Jul 07 web-based training
 - 1 Aug 07 data call begins
 - Aug-Oct 07 question/answer sessions
 - 16 Nov 07 – data due to OACSIM
 - Nov-Jan QA/QC, AAR, revisions for FY08/09



ISR-NI Focus

ISR-NI focuses on the availability, and capability of natural infrastructure to support the mission:

- Land: Space and quality for realistic training
- Water: Supply and discharge to support Soldiers, families, and workforce
- Air: Airspace for training and air quality for industrial operations
- Energy: Availability and security to meet installation requirements





ISR-NI Objectives

Purpose

- Provide leadership at all levels (installation & HQDA) with a decision support tool that adequately assesses the capability of natural infrastructure (land, air, water and energy) to support mission requirements

Objectives

- Link environment to mission impact through partnership with G3
- Army-wide tool
- Reduce reporting burden on installations (auto population)
- Link to resourcing



Pilots and Validation

FY05 Pilot Tests

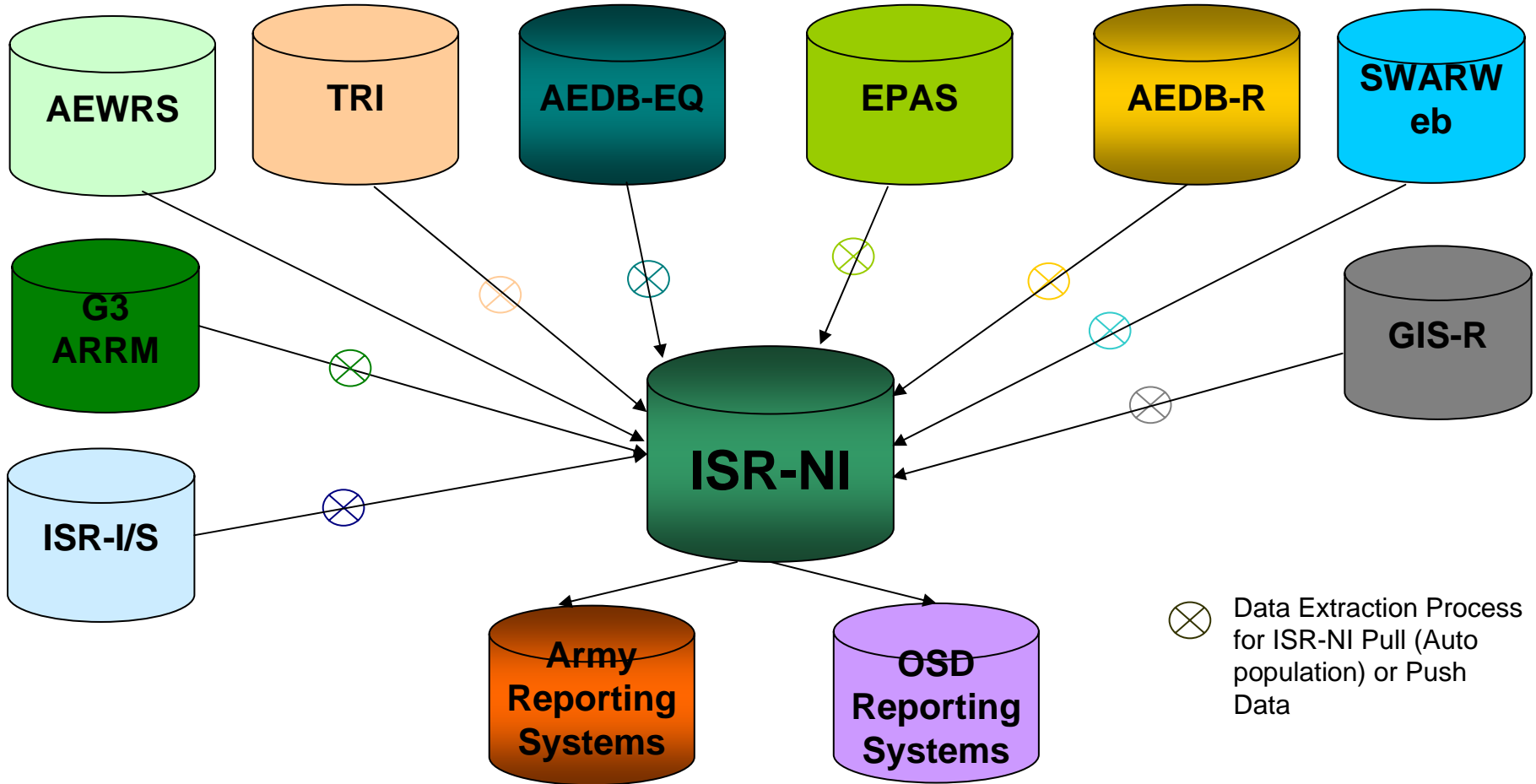
- Fort Lewis
- Anniston Army Depot
- Camp Edwards, MA

FY06 Validation

- Fort Leonard Wood
- Anniston Army Depot
- Fort Bragg
- White Sands
- 81st RRC
- Camp Edwards, MA
- Fort Lewis
- Camp Ripley, MN
- Hohenfels (NICWG NDCEE JSI task)



Connection to Army Databases





Standard Proponents

(Subject to change)

Primary Proponent Organization-Mission Support	# of Standards	Percent of Total Standards
DOL	2	2.7%
DPW	48	65.8%
DPTM/Range Manager	14	19.2%
DPTMS/Safety	4	5.5%
Range Manager	2	2.7%
Master Planner	2	2.7
G3	1	1.4%
Total of 73 Standards	73	100.0%

Primary Proponent Organization-Sustainability Standards	# of Standards	Percent of Total Standards
PAIO	10	19.6%
DPTM	1	2.0%
Master Planning	2	3.9%
DPW	34	66.7%
DOL	2	3.9%
Environmental	1	2.0%
Range Manager	1	2.0%
Total of 51 Standards	51	100.0%



Readiness Summary Report

ISR Viewer Printable Pages - Microsoft Internet Explorer



ISR Natural Infrastructure Readiness Summary Data Year: 2006 - Fort Example

Fort Example		Notional Data					
ISR Natural Infrastructure Program Area	Readiness	Resource Category					
Mission Support	C1	Land C2	Water C2	Air C1	Energy C1		
Sustainability	C2	Land C2	Water C1	Air C2	Energy C1	Implementation & Operation C2	Materials Management C3
Environmental Quality	C3	Land C3	Water C3	Implementation & Operation C3	General Environmental Quality C2		

- Print
- Close
- IE Color Print Info

Readiness	MS	SU	EQ
C1	MS: G >= 95% and R <= 1%	SU: G >= 50%	EQ: G >= 95% and R <= 1%
C2	MS: G >= 80% and R <= 5%	SU: A < 50%	EQ: G >= 80% and R <= 5%
C3	MS: G < 80% or R > 5%	SU: NA	EQ: G < 80% or R > 5%
C4	MS: R > 25%	SU: NA	EQ: R > 25%
C5	Installations in transition		
NA	No Rating		



ISR-NI / G3 Shared Data - Land

Types of Training

Heavy Maneuver

Light Maneuver

Data is provided via the Army RTLP Requirements Model (ARRM) and Encroachment Condition Module (ECM). FY07 is the first run of ECM data.

Expect revision

Encroachment Factors

Threatened and Endangered Species

Critical Habitat

Cultural Resource Sites

Air Quality

Wetlands

Noise Pollution

UXO

Aviation Training Restrictions

Other (Must provide Comment)



ISR-NI Maneuver Standards

Maneuver Standard #1

Total Maneuver Area Available vs. Required: What is the total land area available for maneuver training compared to what is required IAW TC 25-1?

NON-SCORED STANDARD

Maneuver Standard #2

Available Maneuver Land Assets: What is the total area available for maneuver training, after areas affected by encroachments factors are subtracted from the total maneuver land area calculated in Standard #1?

Maneuver Standard #3

Maneuver Land Capability: What is the capability of currently available maneuver lands to meet the requirements of base assigned, tenant, and routine users?

NON-SCORED STANDARD



Data Input Module + "Map It" Functionality

ISR Natural Infrastructure - Microsoft Internet Explorer

ISR NATURAL INFRASTRUCTURE

ISR WEB Home Logout Help

Category: Land C2 MS SU EQ C1 C2 C3 C4

Organization: 24004 Fort Example

ERS: ERS Data Loaded Status: Pending

Fort Lewis

- Mission Support
 - Land
- Water
 - Potable Water
 - Wastewater
- Air
 - Air Quality Control Region
 - Airspace
- Energy
- Sustainability
 - Land
 - Water
 - Air
 - Implementation and Operation

Validate Data Transfer Data to Command Viewer Reports Metric Conversions

MAP IT

Standards General Comments Required Comments

4. Range Lane Availability: Given the number of lanes or firing points for a range, how many are impacted by constraints and to what extent?

General Comments Required Comments Full Standard Desc

10 The actual number of lanes or firing points is:

7 The effective number of lanes or firing points is (taking into account any restrictions): **Notional Data**

Standard Calculation: 70.00 Clear Set NA

5. Range Data ... days for each range ... days remaining?

General Standard Desc

100

85

Standard Clear Set NA

G G G G G G R R G G SAVE DATA

"Map It" Functionality allows the user validate the Auto-Populated Mission Support Land Standards. The ISR user has access to view both the tabular analysis results as well as visualizing the results in a GISR Data Viewer window



GISR Data Viewer – Initial Screen

US Army GIS Repository - Microsoft Internet Explorer





Fort Example

[Logout](#) | [Security](#) | [Request Permission](#) | [Help](#) | [Contact Us](#)

LAYERS

LEGEND

Base Layers

-  Installation Boundary (55,000 acres)
-  10-Mile Buffer (550,999 ac)

Maneuver Land Standard 1 of 3
Maneuver Land Standard 2 of 3
Maneuver Land Standard 3 of 3

Refresh Map

Notional Data





GISR Data Viewer – Maneuver Standard 1

US Army GIS Repository - Microsoft Internet Explorer





Fort Example

[Logout](#) | [Security](#) | [Request Permission](#) | [Help](#) | [Contact Us](#)



LAYERS

LEGEND

Base Layers

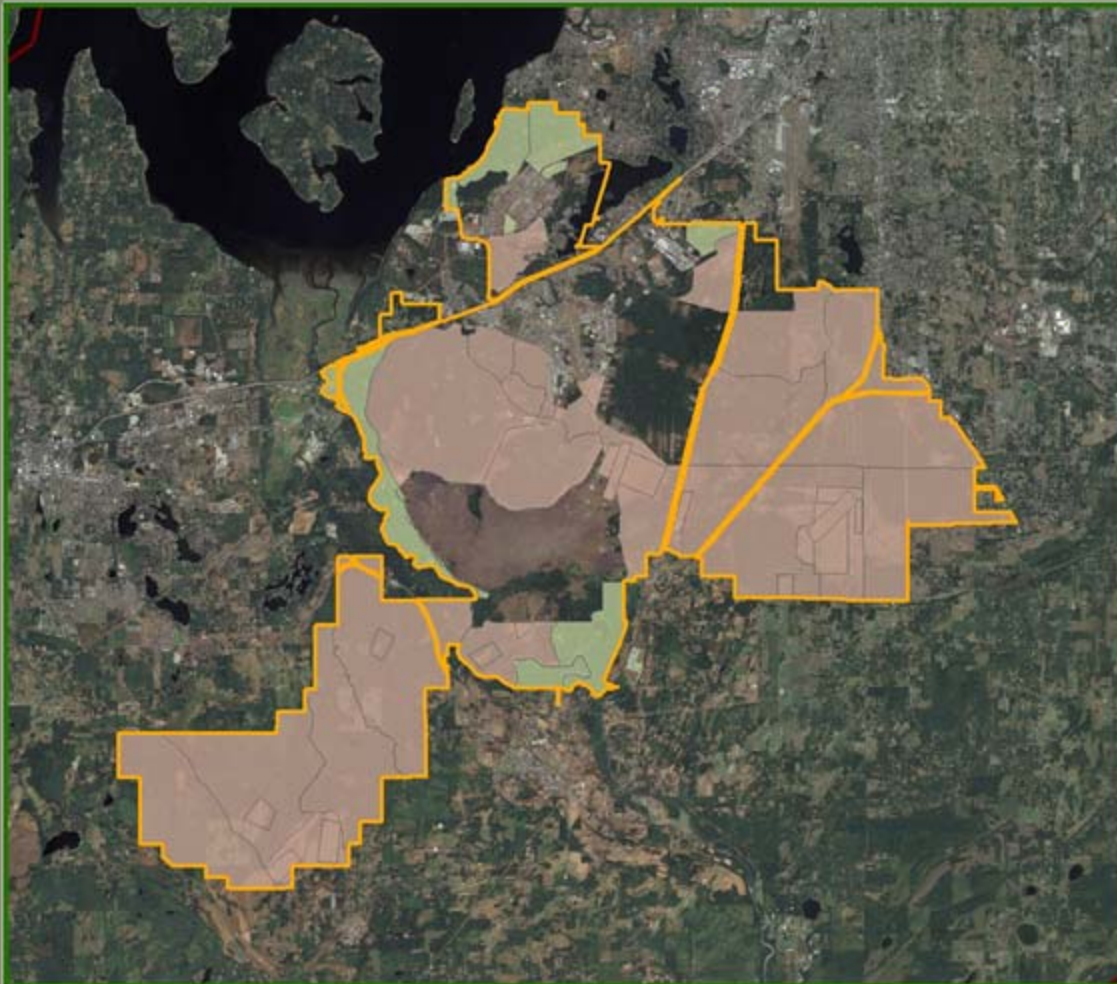
-  Installation Boundary (55,000 acres)
-  10-Mile Buffer (550,999 ac)

Maneuver Land Standard 1 of 3

-  Training Activity 1 (5,750 ac)
-  Training Activity 2 (28,450 ac)




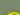
Maneuver Land Standard 2 of 3

Maneuver Land Standard 3 of 3



Refresh Map

Notional Data

-  Zoom In
-  Zoom Out
-  Pan
-  Previous Extent
-  Zoom US
-  Zoom World
-  Layer Identify
-  Identify
-  Installations
-  Ranges
-  Buffer
-  Measure
-  Print
-  Create Parcel
-  Select Parcel
-  Delete Parcel
-  Add to Parcel
-  Clip Parcel
-  Edit Parcel Info
-  Parcel Info



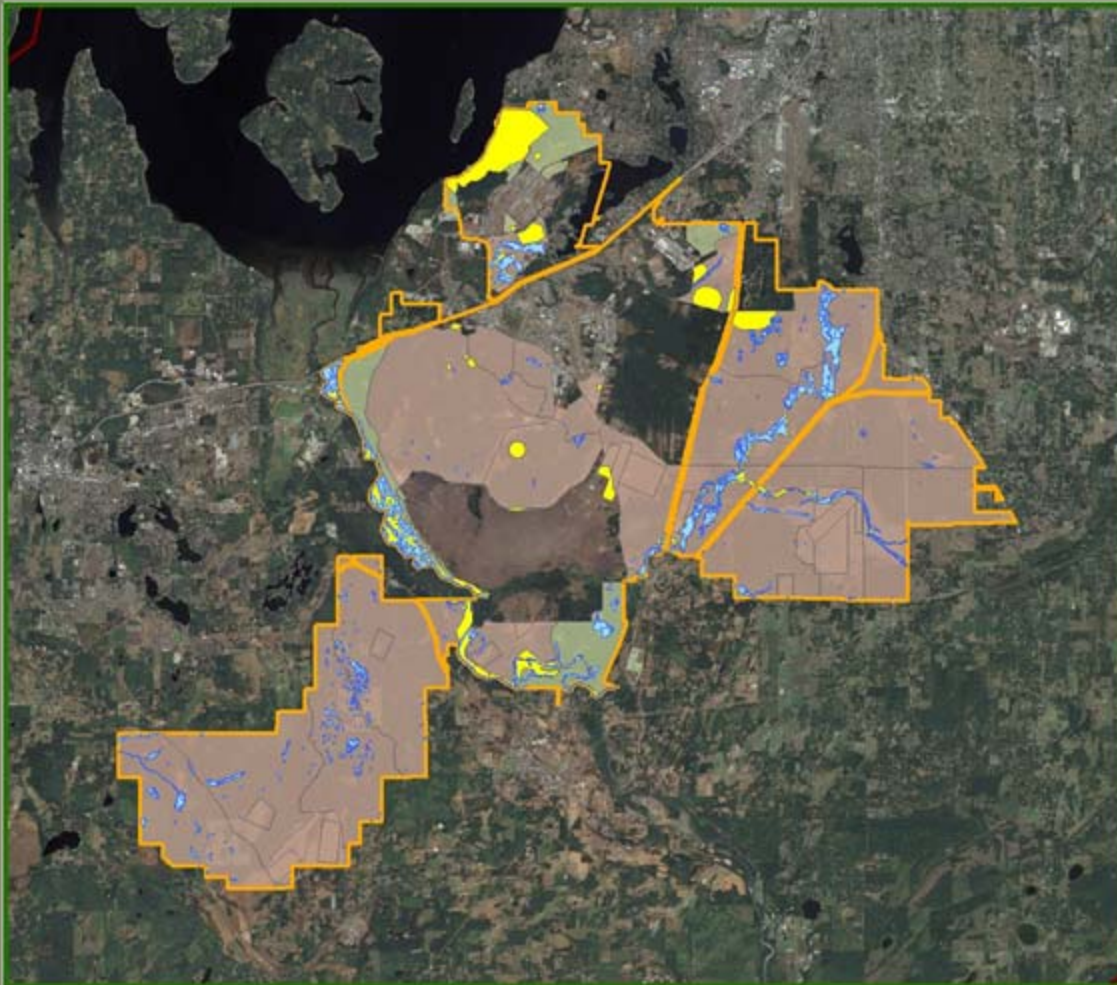
GISR Data Viewer – Maneuver Standard 2

US Army GIS Repository - Microsoft Internet Explorer



Fort Example

[Logout](#) | [Security](#) | [Request Permission](#) | [Help](#) | [Contact Us](#)



LAYERS LEGEND

Base Layers

- Installation Boundary (55,000 acres)
- 10-Mile Buffer (550,999 ac)

Maneuver Land Standard 1 of 3

- Training Activity 1 (5,750 ac)
- Training Activity 2 (28,450 ac)

Maneuver Land Standard 2 of 3

- Training Activity 1**
 - Encroachment Factor 1 (1,234 ac)
 - Encroachment Facotr 2 (1,768 ac)
- Training Activity 2**
 - Encroachment Factor 1 (2,000 ac)
 - Encroachment Factor 2 (1,560 ac)

Maneuver Land Standard 3 of 3

Refresh Map

Notional Data

- Zoom In
- Zoom Out
- Pan
- Previous Extent
- Zoom US
- Zoom World
- Layer Identify
- Identify
- Installations
- Ranges
- Buffer
- Measure
- Print
- Create Parcel
- Select Parcel
- Delete Parcel
- Add to Parcel
- Clip Parcel
- Edit Parcel Info
- Parcel Info



Data Input Module – Maneuver Standard 2

ISR Natural Infrastructure - Microsoft Internet Explorer

ISR WEB Home | Select Org | Logout

Organization: 25236
Fort Example
Status: Pending

Resource SubCategory: Range Complex [C4]

Readiness: C1, C2, C3, C4

Base Attributes | **Standards** | General Comments | Required Comments

2. Available Maneuver Land Assets: What is the total area available for maneuver training, after areas affected by the total range complex area calculated in Standard #1?

Enter/View Comments | Full Standard Desc

Total available Days	Total Acre-Days Available	Total Acre-Days Encroached	Available Acre-Days Remaining	Percent Acre-Days Available	Individual Resource Color Rating
365	2,098,750	507,850	1,590,900	75.80%	A
365	10,384,250	1,299,400	9,084,850	87.48%	G
0	0	0	0	0	N/A
0	0	0	0	0	N/A

Clear | Set NA | **Notional Data**

capability of currently available maneuver lands to meet the requirements of

Enter/View Comments | Full Standard Desc

Pre-Day Requirements	Available Acre-Days Remaining	Percent Acre-Days Available after Encroachment Factors Removed	Individual Resource Color Rating
1	1	n	n

N | R | R | G | CANCEL | SAVE DATA

Range Complex - Encroachment Factors -- Web Page Dialog

Standard #: 2 Training Type: Training Activity 1

Encroachment Factor	Area Impacted (Acres)	Days Encroached	Acre-Days Encroached
Encroachment Factor 1	1,234	125	154,250
Encroachment Factor 2	1,768	200	353,600
Encroachment Factor 3			
Encroachment Factor 4			

Notional Data

Current Resource Color Rating: C1

Clear All | Save All | Close



Implementation Schedule

- FY07- Beta Test
 - Site selection based on availability of ECM data
 - Data call begins 01 Aug 07
- FY08 Implementation Phase I
 - SRP Tier I and II bases
 - Select additional locations
 - Validate methodology for aggregation of NGB and Reserve Sites to the State and RRC level
 - Validate overseas language with working group
- FY09 Implementation Phase II
 - SRP Tier I, II, III CONUS (includes IMCOM, NGB, Reserves, AMC)
 - OCONUS
- FY10 Army-Wide



FY07 Beta Test Locations

FY07 Beta Test Locations	Region/State	ARCOM
Atterbury	Indiana	NGB
Ripley	Minnesota	NGB
Picket	Virginia	NGB
Fort Chaffee	Arkansas	NGB
Dix	NE	IMCOM-R
Hunter Liggett	SW	IMCOM-R
McCoy	NW	IMCOM-R
AP Hill	NE	IMCOM
APG	NE	IMCOM
Benning	SE	IMCOM
Bliss	SW	IMCOM
Bragg	SE	IMCOM
Campbell	SE	IMCOM
Carson	NW	IMCOM
Pinon Canyon	NW	IMCOM

FY07 Beta Test Locations	Region/State	ARCOM
Drum	NE	IMCOM
Eustis	NE	IMCOM
Hood	SW	IMCOM
Irwin	SW	IMCOM
Knox	SE	IMCOM
Leonard Wood	NW	IMCOM
Lewis	NW	IMCOM
Yakima	NW	IMCOM
Polk	SW	IMCOM
Rucker	SE	IMCOM
Sill	SW	IMCOM
Stewart	SE	IMCOM
Story	NE	IMCOM
White Sands	SW	IMCOM
Yuma	SW	IMCOM
HI USARPAC sites	PARO	IMCOM



ISR-NI Program Manager:

Leslie Walrath

(703) 601-1962

leslie.walrath@hqda.army.mil

ISR Website:

<http://isr.hqda.pentagon.mil>