

Headquarters U.S. Air Forces in Europe

“Bring Your Courage”

GeoReach/Expeditionary Site Mapping



**Jane Goldberg
USAFE/A7CRG**

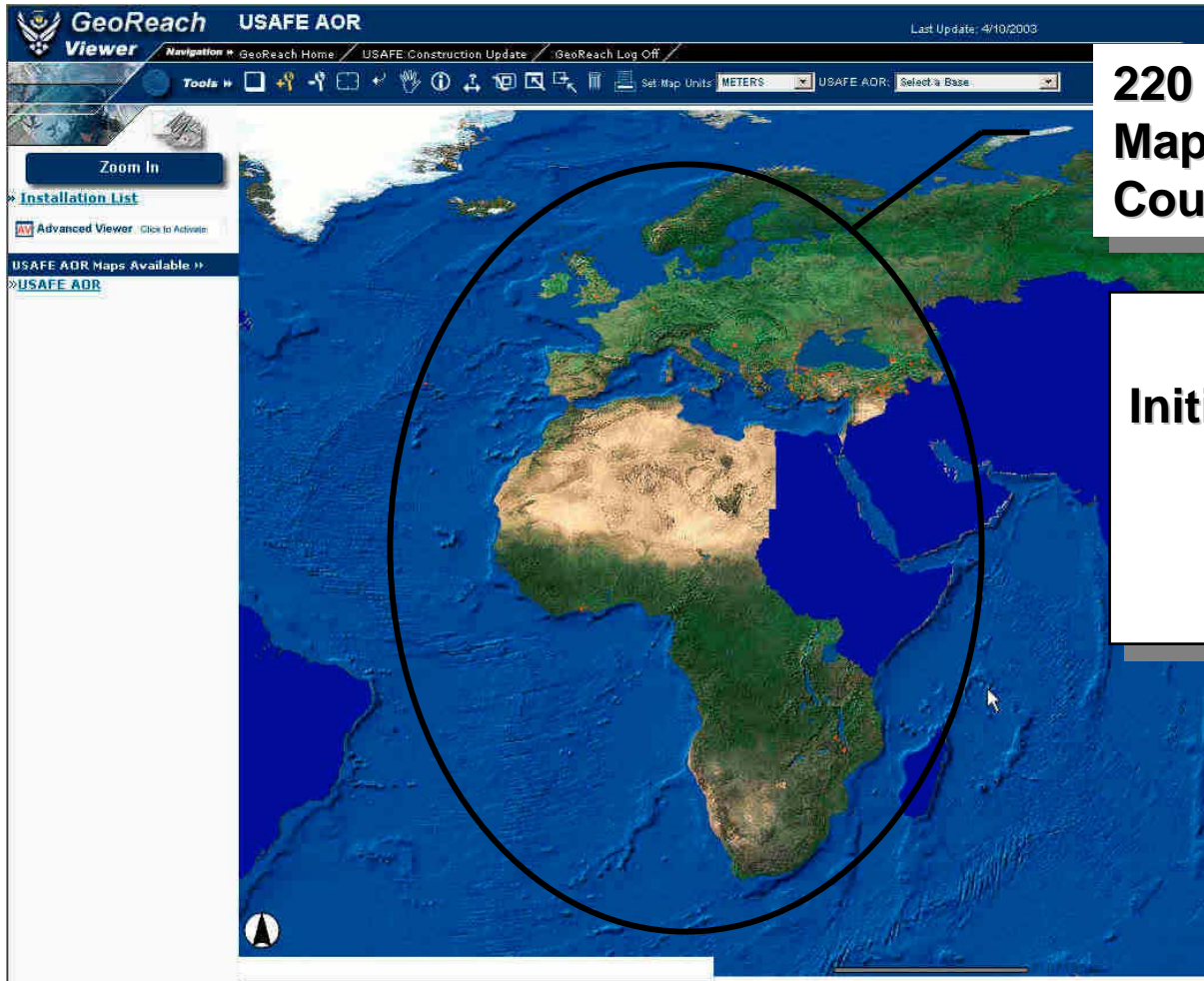


Overview

- **USAFE GeoReach Program**
- **Update on Expeditionary Site Planning Portal (ESP2)**



USAFE GeoReach Status



**220 Expeditionary Site
Maps; 90 CIPS in 65
Countries**

**USAFE
Initial Mapping Service
Operational
1 March 2003**

UNCLASSIFIED

"Bring Your Courage"



GeoReach Current Status

- **USAFE developing Air Force GeoReach Graphic User Interface**
- **Initial GUI was developed using existing USAFE resources**
 - **Sent out to AF/ILEX, PACAF, and ACC for review in Oct 03**
 - **Estimated cost to develop finalized GeoReach GUI is \$75,000**
 - **Funding was received by USAFE March 04**
 - **Contract awarded to CH2M Hill April 04**
 - **Estimated completion date Oct 04**
 - **Will be closely coordinating this deliverable with AF/ILEX, PACAF and ACC**
 - **Meeting held onsite at USAFE with ACC June 04 to help develop a standardized data architecture between the CAFS**



OIF Lessons Learned

SITUATION

- Eight Sites in Turkey
- Eight Teams
- 14-20 Person Teams

CHALLENGE

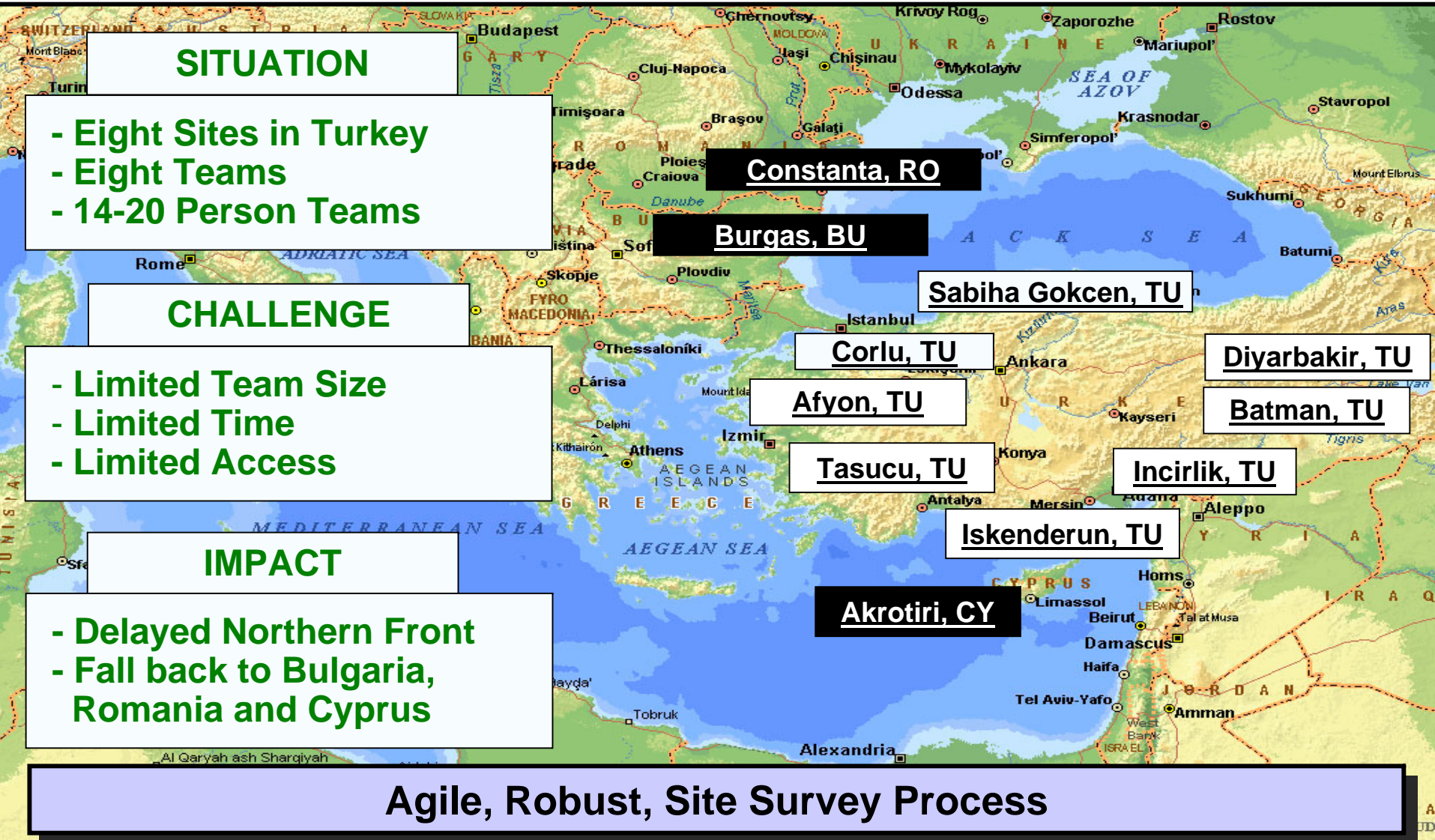
- Limited Team Size
- Limited Time
- Limited Access

IMPACT

- Delayed Northern Front
- Fall back to Bulgaria, Romania and Cyprus

Agile, Robust, Site Survey Process

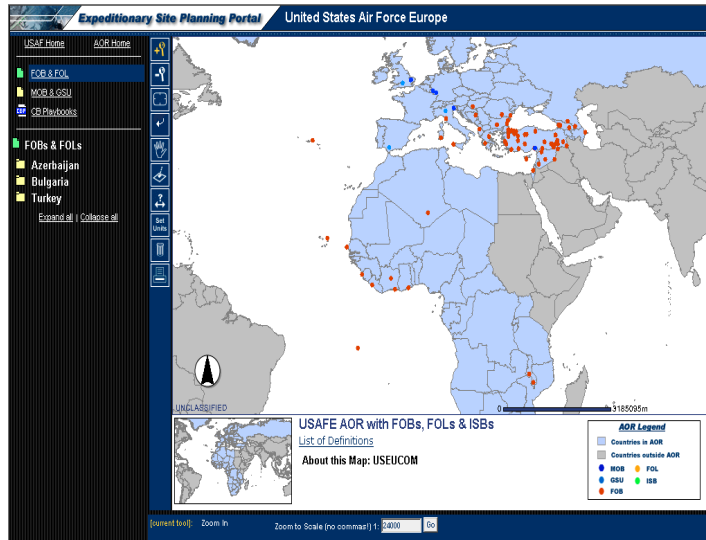
"Bring Your Courage"





Overview - What is the Expeditionary Site Planning Portal (ESP2)

- A “one-stop” site for access critical planning resources
- An integrated view into XP, DO, LG and CE ESP efforts, such as base access plans



- Incorporates the Contingency Basing Playbook which:
 - Uses XPZ contingency basing requirements areas
 - Associates missions/forces to expeditionary sites
 - Prioritizes site survey activities
 - Drives comprehensive beddown assessments
 - Creates site “statement of requirements”
- A collection of “smart” beddown maps/plans

- Implements the USAFE Basing Strategy 2020 Expeditionary Basing Playbook concept
- A flexible technology environment allowing integration to databases and websites

“Bring Your Courage”



“Improving Situational Awareness Through An Integrated View”

Contingency Basing Rqmt Areas



Planned Force Packages & RQMTS

Caucasus / Black Sea CBP Forces Summary – Northern Iran
(Prototype Example)

CBP Black Sea - MI Location	Mission Type and Priority			Forces Detail		
	Priority	Sec	Ter	PI	Sec	Ter
Nasosnaya, AZ	Strike CAS	Channel IIR	Surge	6 A10	4 C130 1 C17	2 F16 1 C9
Batman, TU	EL Helo	EL Camp A	Surge	6 F15 6 F16	4 F15 1 C9	2 F16 1 C9

Notes:
 EL = Low Lighting
 * Missions with TDW to determine highest threat regions
 * Missions with CO, CS, AOC to determine operational requirements, AOC, assign mission types, aircraft number and priorities
 * Load mission, aircraft number and priorities to perform a beddown assessment
 * Challenge the COC action

Comprehensive Survey Data

FOR OFFICIAL USE ONLY

MIHAIL KOGALNICEANU

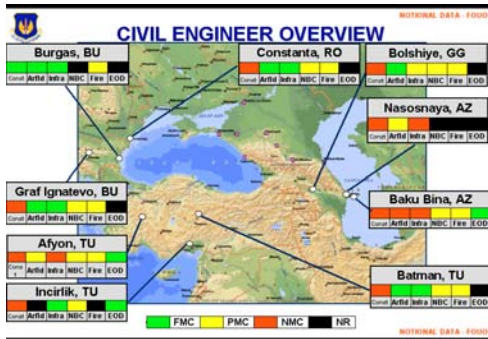
8/10/2003

Chapter 7 - Airfield Operations

Airfield General Information

MIHAIL KOGALNICEANU Airfield
 Alt. Airfield Name: NONE
 Operator:
 Airfield Type: Joint (civil and military) airfield
 Elevation (ft): 354
 Magnetic Variation:
 Latitude/Longitude: 40°14'30" N / 29°21'00" E

Results:



Functional Shortfall & LIMFACs

“The Window”

“Smart” Beddown/Airfield Plans

Medical Evaluations

JRAMP – Threat Assessment

Host Nation Access RQMTS

PAVE Evaluations

Etc...

Critical Planning Resources

“Bring Your Courage”



ESP2 Vision

- **Provide war planners a one-stop collaborative decision support system to facilitate timely and thorough “use” analysis and assessments of potential beddown sites based on pre-existing site surveys, airfield databases and authoritative information sources**
- **Design, develop and deploy a user-friendly system capability to enable the Agile Site Planning concepts and to ensure system sustainability.**
- **Improving Situational Awareness Through and Integrated view**



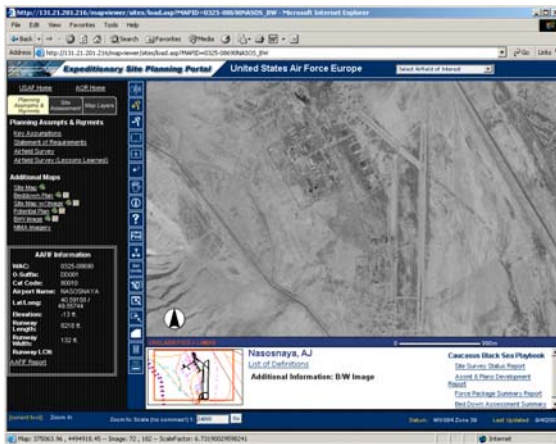
Expeditionary Site Planning Portal

- **USAFE/A4 promised \$172,000 to further develop ESP2 Prototype only funded \$122,000**
- **Vision of ESP is to "Provide war planners a one-stop collaborative decision support system to facilitate timely and thorough "use" analysis and assessments of sites based on pre-existing site surveys, airfield databases and authoritative information sources."**
- **Web Based tools are being developed to support the vision: Operations suitability analyzer and querying tool, Contingency Basing Playbook builder, Statement of Requirements Analyzer, and Beddown Analyzer**
- **Alpha version completed future development on hold due to funding limitations**



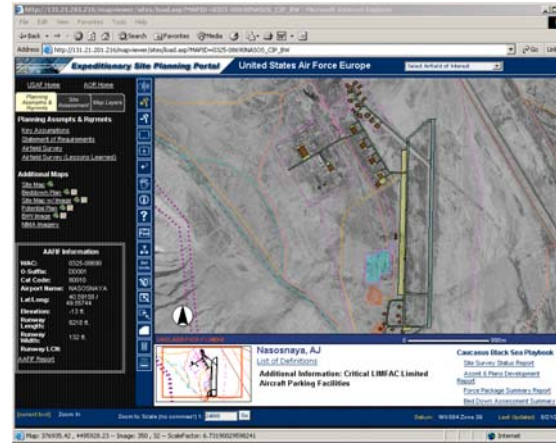
Overview of Creating Smart-Maps

Flexible level of effort tailored to deliberate and crisis action planning process



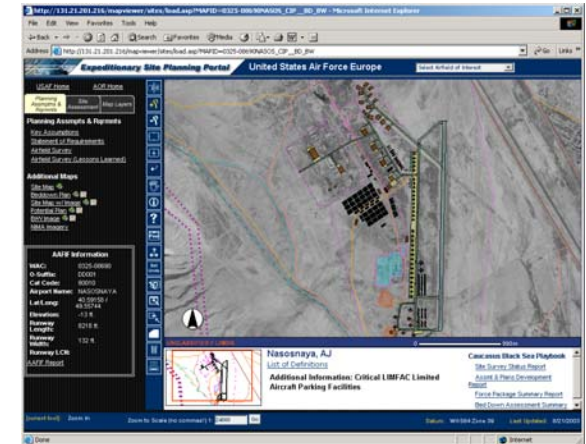
“Dumb” Map

- Initial image of the site
- Published to portal, one hour
- Inherent links relevant to site



“Semi-Smart” Map

- Use “Best Available” imagery
- Extract map features
- Features attributed with NIMA AAFIF data
- Preliminary bed-down plans



“Smart” Map

- Refinement based on:
 - Statement of Rqmts
 - Refined MWS
 - Tailored UTCs
- Detailed visualization
- Results of site survey

Not just a smart map, but a ‘smarter’ map

“Bring Your Courage”



ESP2 Performance Objectives

- 10-15 Potential Sites Within 2hrs Based on Set Criteria;
 - Reduced to 3-5 Sites Based on Expanded Criteria
- Complete Preliminary Beddown Assessment (PBA) for Candidate Sites
 - For Pre-identified Core Sites, Complete Within 4hrs of Notification
 - For Unidentified Sites, 24hrs
- Develop Initial Smart-map Within 24 Hours of Completing Pre-deployment Site Survey (PDSS)
- Accomplish PDSS With 6- 8 Team Members Within 2 Days
- Manages ESP2 Contents Tailored to a Given Operation
 - Initial Playbook in 7 Days During Crisis and 4 Weeks During Deliberate Planning

Ops Suitability Query & Analyzer

Beddown Analyzer

SOR Generator

GeoReach

Site Survey Planner

Contingency Basing Playbook Builder

Expeditionary Site Planning (ESP)

ESP2: AN EXTENSION OF THE GEOREACH PLATFORM

“Bring Your Courage”



Operations Suitability Analyzer

Expeditionary Site Planning Portal United States Air Forces Europe USAFE AOR

Site Information | Map Layers | FOBs, FOLs & ISBs | MOBs & GSUs | Suitability Analyzer | BSP | PBA | SOR

Base Support Plan

Expeditionary Site Planning

- Chapter 07 Airfield GeneralU
- Chapter 07 ApronsU
- Chapter 07 HardstandsU
- Chapter 07 HASU.rtf
- Chapter 07 LightingU
- Chapter 07 Obstructions
- Chapter 07 Runways
- Chapter 07 Taxiways
- Chapter 15 Off Base Food
- Chapter 15 Quarters
- Chapter 16 Off Base Medical
- Chapter 16 On Base Medical Facility
- Chapter 19 Bulk Fuel Fillstands
- Chapter 19 Bulk Fuel Storage Tanks
- Chapter 19 Cryogenics Facilities
- Chapter 19 Dispensing
- Chapter 19 Military Service Station
- Chapter 19 Personnel
- Chapter 19 Receiving
- Chapter 24 Maintenance Shops

Airfield Information

- PACE Airfield Report
- Pavement Evaluation
- DIA Gemini Infrastructure Intelligence
- Bed Down Assessment

Full Spectrum Threat

- JRAMP
- AMC Virtual Threat Assessment
- Medical

Operations Suitability Analyzer (Create Airfield MWS Information)

Nasosnaya, AJ - 0325-08690

Airfield Information

Reviewed By: Office Symbol: OSN Phone:

First Last: DOB:

Select MWS: Select MWS:

Airfield Compatibility:	Yes	None
Airfield Compatibility:	Yes	None
Runway:	Yes	None
Taxiway:	Yes	None
Ramp/Apron:	Yes	None
MWS Range	Yes	None
Hermetic:	Yes	None
Fuel:	Yes	None
Inst Approach & Depart (IAP):	Yes	None
Arm/De-Arm:	Yes	None
Weapons Storage:	Yes	None
Hazard Material:	Yes	None

Create Record

Fuel Storage Area

Munition Storage O2

Munition Storage O1

Nasosnaya, AJ - Beddown Plan

[List of Definitions](#)

Critical LIMFAC: Critical LIMFAC Limited Aircraft Parking Facilities

[current tool]: Zoom In Zoom to Scale (no comma): 1: 24000 Go Select Airfield of Interest Datum: WGS84 Zone 39 Last Updated: 8/21/2003

BSP Chapters

Airfield Info Links

Threat Assessments

“Bring Your Courage”



Operations Suitability Summary Report

Expeditionary Site Planning Portal
United States Air Forces Europe
USAFE AOR

Site Information
Map Layers
FOBs, FOLs & ISBs
MOBs & GSUs
Suitability Analyzer
BSP
PBA
SOR

Base Support Plan

Expeditionary Site Planning

- [Chapter 07 Airfield GeneralU](#)
- [Chapter 07 ApronsU](#)
- [Chapter 07 HardstandsU](#)
- [Chapter 07 HASU.rtf](#)
- [Chapter 07 LightingU](#)
- [Chapter 07 Obstructions](#)
- [Chapter 07 Runways](#)
- [Chapter 07 Taxiways](#)
- [Chapter 15 Off Base Food](#)
- [Chapter 15 Quarters](#)
- [Chapter 16 Off Base Medical](#)
- [Chapter 16 On Base Medical Facility](#)
- [Chapter 19 Bulk Fuel Fillstands](#)
- [Chapter 19 Bulk Fuel Storage Tanks](#)
- [Chapter 19 Cryogenics Facilities](#)
- [Chapter 19 Dispensing](#)
- [Chapter 19 Military Service Station](#)
- [Chapter 19 Personnel](#)
- [Chapter 19 Receiving](#)
- [Chapter 24 Maintenance Shops](#)

Airfield Information

- [PACE Airfield Report](#)
- [Pavement Evaluation](#)
- [DIA Gemini Infrastructure Intelligence](#)
- [Bed Down Assessment](#)

Full Spectrum Threat

- [JRAMP](#)
- [AMC Virtual Threat Assessment](#)
- [Medical](#)

Operations Suitability Analyzer Summary (Management Report)

Nasosnaya, AJ
WAC: 0325-08690
ICAO: Date: 12/11/2003

MNS	Airfield Compatibility	OPS Suitability	Last Review	Name Office Phone
A-10	Y	Runway: Y Taxiway: Y Ramp/Apron: Y Fuel: NE SAP: NA Amdt-Ann: YL MNS Range: YL Hazard Storage: YL Hazard Material: Y	12/11/2003	Blair, J. L. 855-1234
C-130H	Y	Runway: Y Taxiway: YL Ramp/Apron: YL Fuel: ND SAP: Y Amdt-Ann: NA MNS Range: NA Hazard Storage: NA Hazard Material: N	12/11/2003	Harris CERO 855-9928
F-15CD	Y	Runway: Y Taxiway: Y Ramp/Apron: Y Fuel: Y SAP: Y Amdt-Ann: Y	12/11/2003	First Last 000-XXXX

Legend

- Y - Yes
- YL - Yes With Limits
- N - No, Absolute Show Stopper
- ND - No Data Available
- NA - Not Applicable

Nasosnaya, AJ - Beddown Plan

[List of Definitions](#)

Critical LIMFAC: Critical LIMFAC Limited Aircraft Parking Facilities

[current tool]: Zoom In Zoom to Scale (no comma): 1: 24000 Go Select Airfield of Interest Datum: WGS84 Zone 39 Last Updated: 8/21/2003

“Bring Your Courage”



Contingency Basing Playbook (CBP) Builder

Expeditionary Site Planning Portal United States Air Forces Europe USAFE AOR

FOBs, FOLs & ISBs | MOBs & GSUs | Map Layers | AAFIF Information | **CBP Builder** | CBPs | CBRA's | Suitability Query

Contingency Basing Playbook Builder

Administration
[Build a New CBP](#)
[View CBPs & Edit](#)

References

UNCLASSIFIED

USAFE AOR with FOBs, FOLs & ISBs
USAFE MOBs and Potential Forward Operating Locations Currently Mapped by the Geo-Integration Office

[List of Definitions](#)
Critical LIMFAC: USAFE MOBs and Potential Forward Operating Locations Currently Mapped by the Geo-Integration Office

Current tool: Zoom In Zoom to Scale (no comma): 1: 24000 Go Select Airfield of Interest Datum: WGS84 Zone 39 Last Updated: 8/21/2003

“Bring Your Courage”



Initial Feedback

- **JFACC Exercise Austere Challenge 04- USAFE Warfighting HQ Certification**
 - **ESP2 Provided Quick Access to Maps and Site Survey Data**
 - **Facilitated Faster Beddown Assessments Supporting COA Development**
 - **Quicker Assessments = Quicker Decision-making for War Planners**
- **EUCOM Transformation**
 - **Provided One-stop Site for Survey Data Supporting ECJ5**
 - **Access to Pre-existing Data Focused Working Group Efforts**
- **AFEUR A33 JOPES Cell Chief: “I Wish We Had This During OIF...a Definite Timesaver”**
- **AFEUR CC: “This Is Good Stuff...Exactly What We Need”**



QUESTIONS?

“Bring Your Courage”