

# ***The Army and Space...***

## ***An Essential Relationship!***

***COL(P) Roger F. Mathews***

**Deputy Commander for Operations  
U.S. Army**

**Space and Missile Defense Command /  
U.S. Army Forces Strategic Command**



# ***Your Army – Serving The Nation...***

## ***From Combat Operations...***



- **236,000-plus Soldiers** deployed overseas in 80 countries
- **Composed of adaptive & innovative Soldiers**
- **Led by experienced leaders**
- **Enabled by advanced technologies**



***... to Disaster Relief and Humanitarian Assistance Operations***

***Smart, well-trained Soldiers are the key to success***

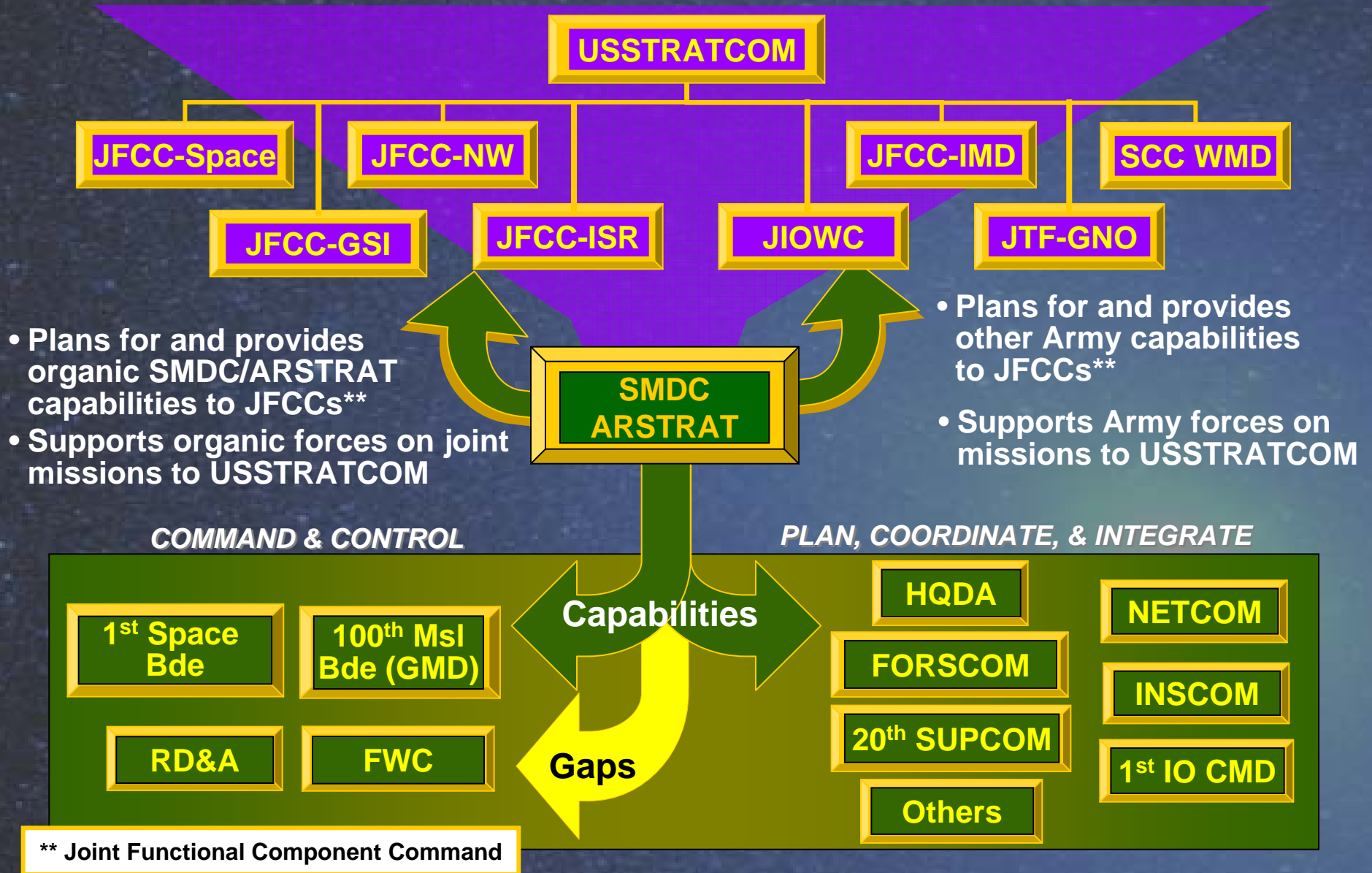
# US Strategic Command

Provide the nation with **global deterrence capabilities** and **synchronized DoD effects** to combat adversary weapons of mass destruction worldwide. Enable decisive global kinetic and non-kinetic combat effects through the application and advocacy of integrated ISR, space and global operations, information operations, integrated missile defense and robust command and control.

## Mission Areas



# USASMDC/ARSTRAT Army Service Component Command Functions





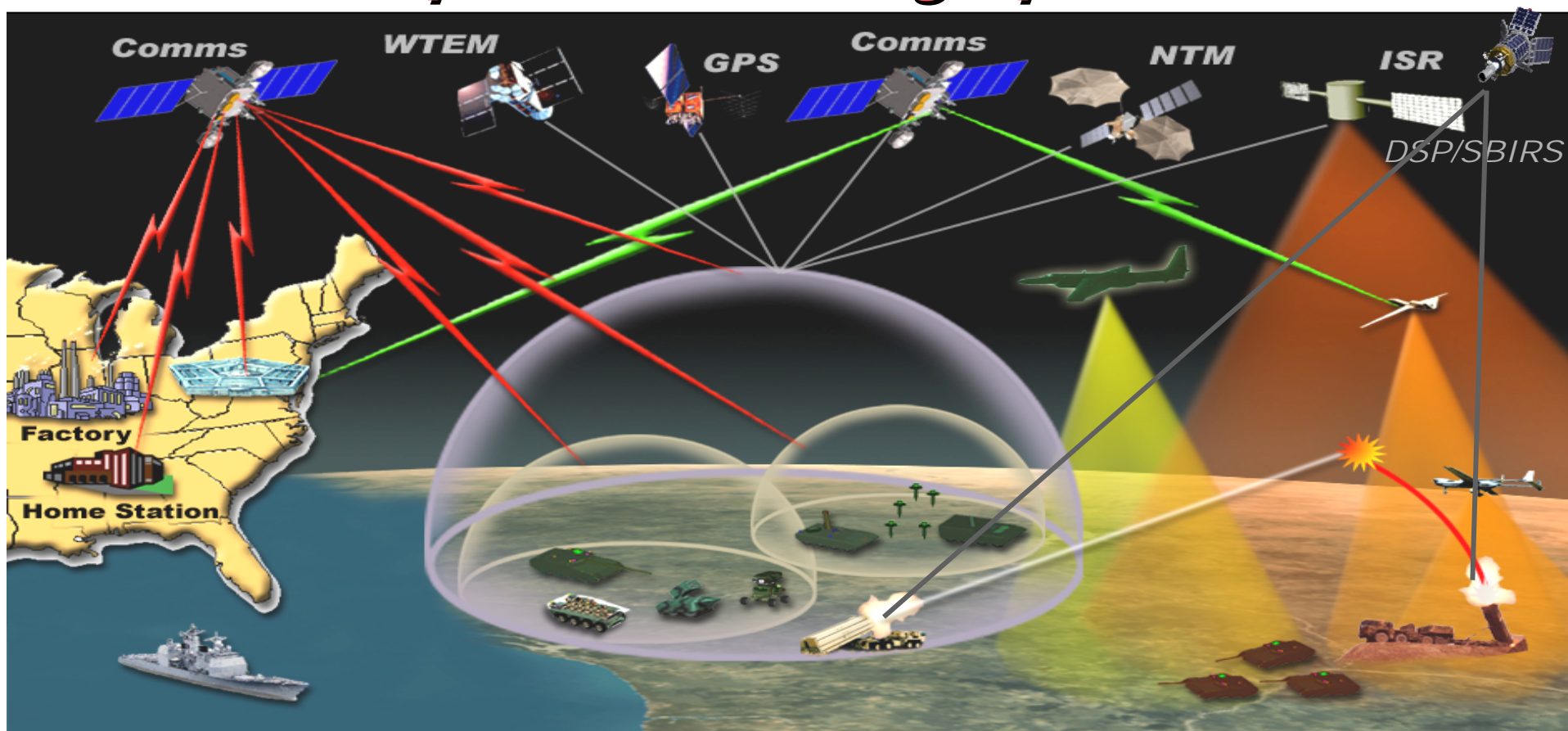
*U.S. Army Space and Missile Defense Command /*



*Army Forces Strategic Command*

# *Operationalizing Space*

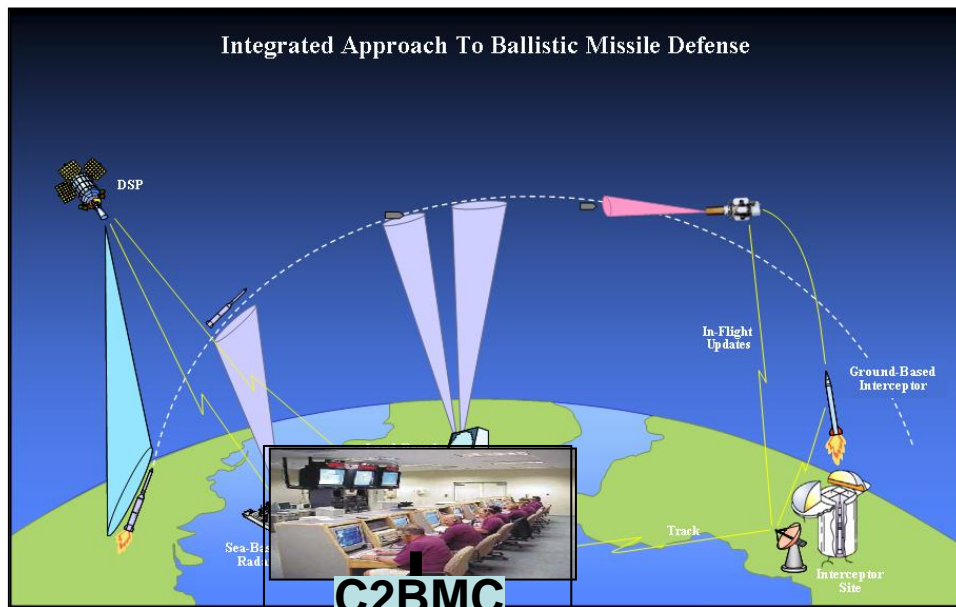
*JFCC IMD*



- **Enable, extend, protect the network (Joint C2/NECC)**
- **Provide responsive space sensors for battlespace awareness**
- **Enable engagements out of contact; incorporate non-kinetic effects**
- **Improve logistics capabilities**

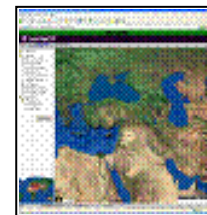


# Integration - Net-Enabled Command Capability (NECC)

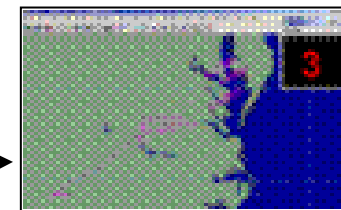


New test moves Integrated Missile Defense Command & Control Battle Management & Communication (C2BMC) toward net-centric operations

Pushes situational awareness & planning to DoD C2 users



DoD users of C2BMC information



**C2BMC**

**C2BMC NECC Services**

- Situational Awareness
- Planning

Ballistic Missile Defense picture

- Threat/interceptor tracks
- Engagement information

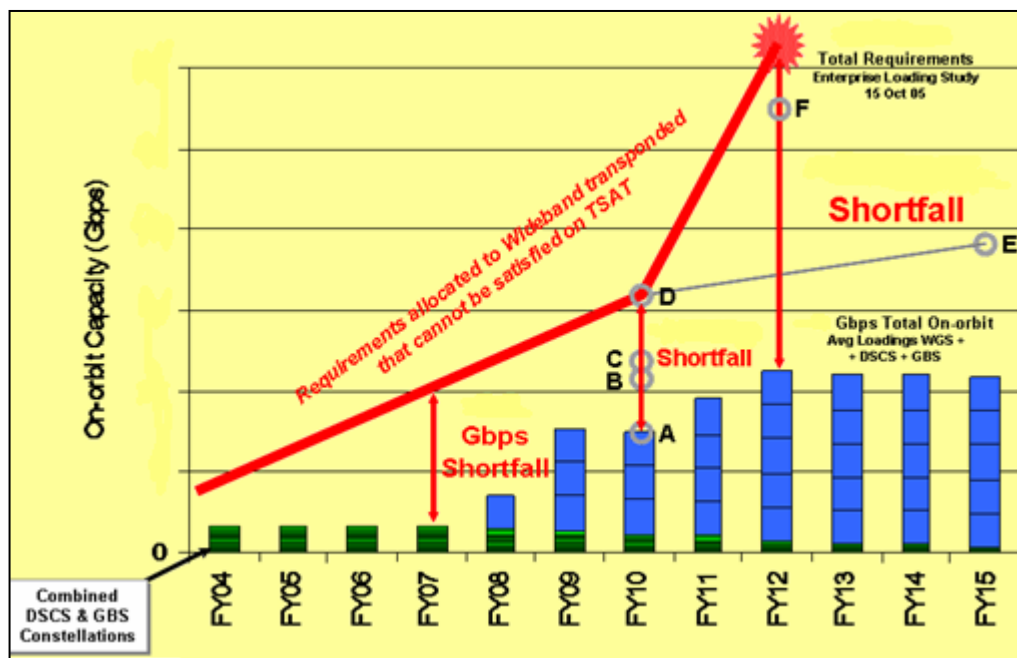
SIPRNET

Net-enabling services:  
Registry, Security,  
Common Data Source Adaptor



# Capabilities Gap

## Projected Wideband Shortfall Over Time



## Warfighter Impact

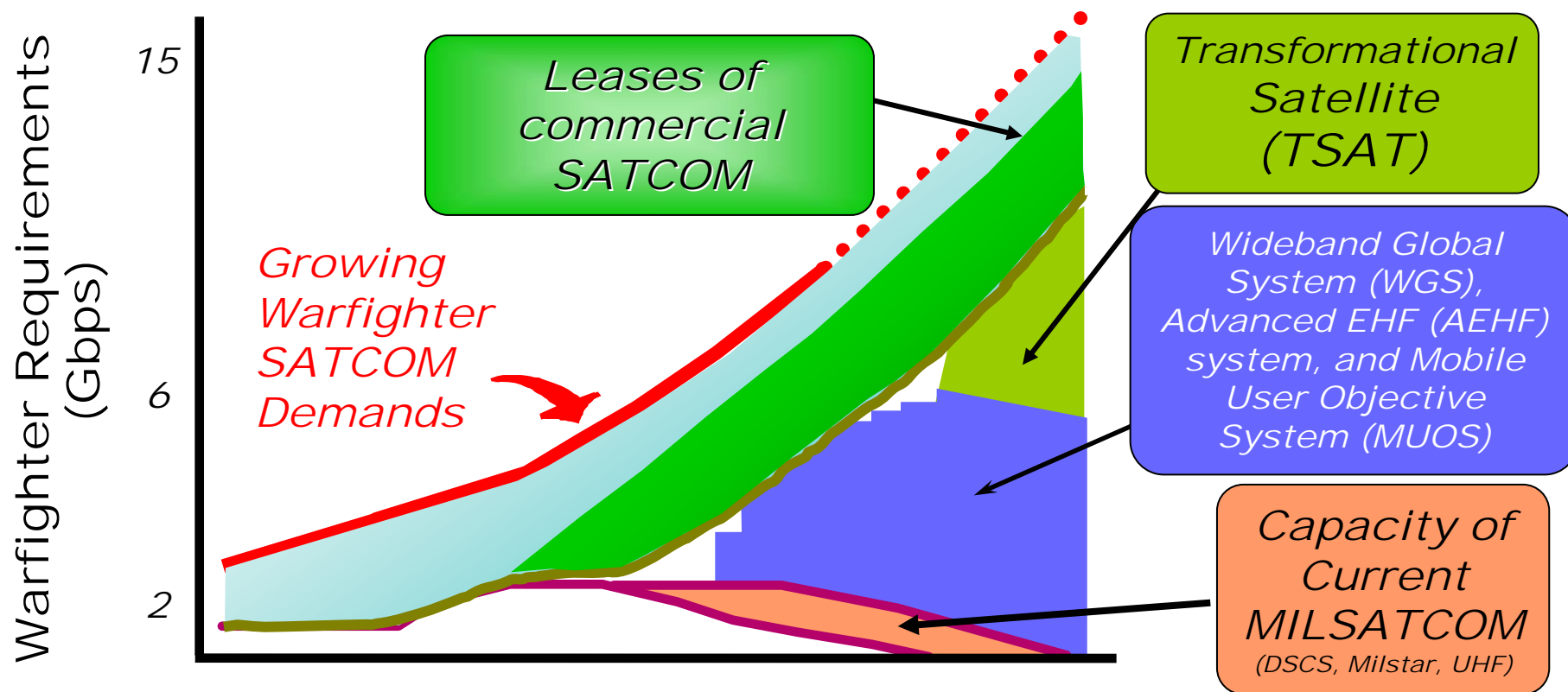
- **Gaps increase risk to future operations for USPACOM**
  - Available Military and Commercial SATCOM is limited
  - OPLAN requirements are stressing
- **Increased risk to the Global War On Terrorism**
  - *Available commercial SATCOM capacity is heavily committed to CENTCOM*
  - *SATCOM needed to support a second major operation may exceed combined remaining military & commercial capacity*
- **Increased cost for operations**
  - *More leases for Commercial SATCOM to fill gaps left by military systems*

- **Capacity shortfalls will continue**
- **Size of identified gaps grow as**
  - Schedules for next generation systems are stretched
  - Performance of next generation systems is reduced

**Keep SATCOM Programs On-Schedule and On-Performance**



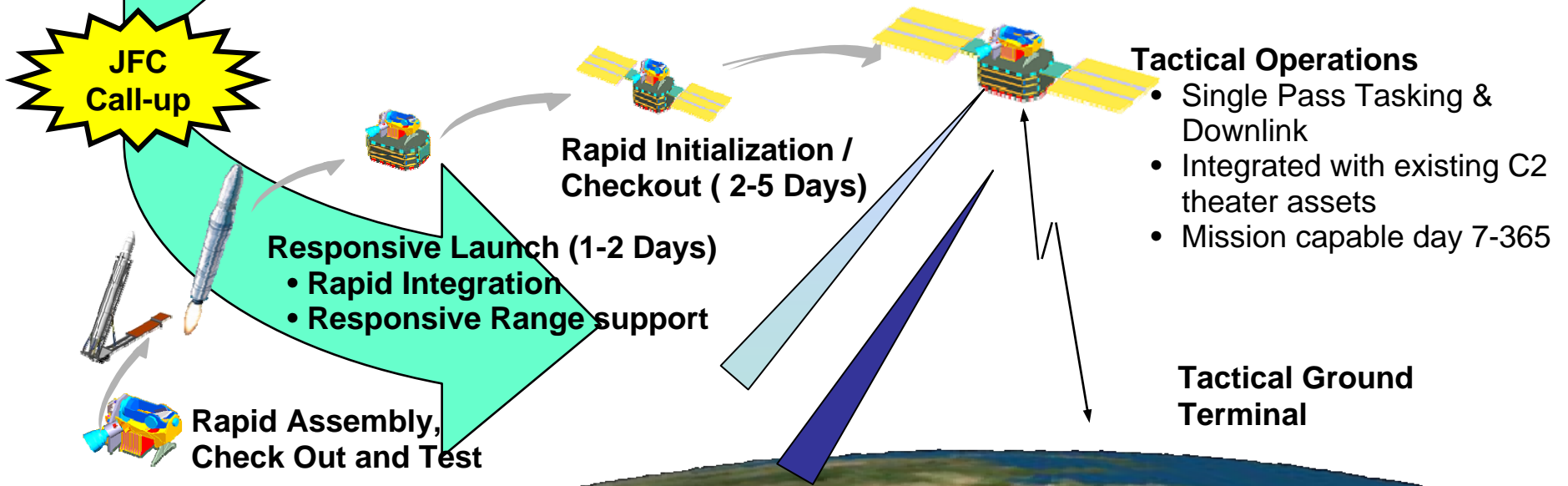
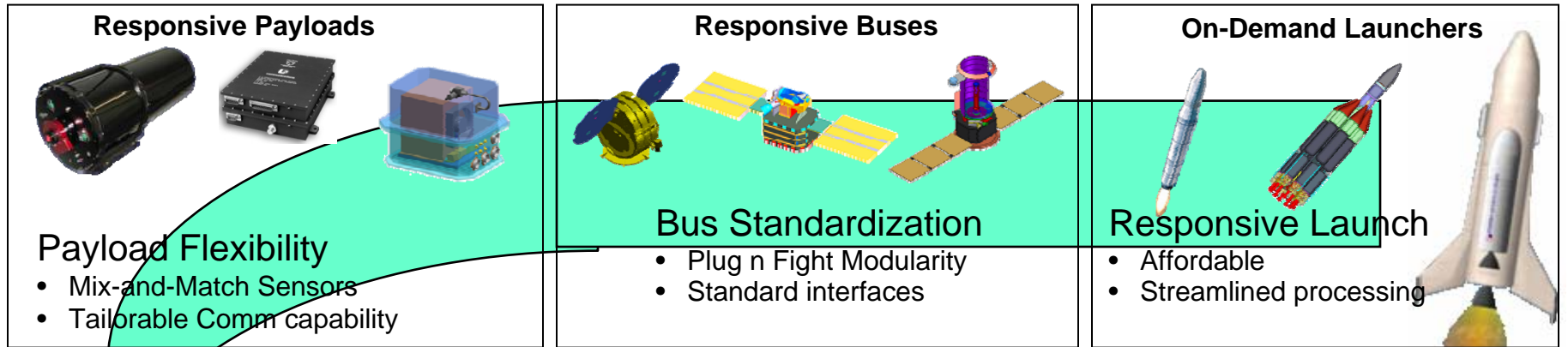
# SATCOM Requirements



**Increasing requirements exceed capacity of DoD owned & operated MILSATCOM systems**



# Operationally Responsive Space Concept



**Operationally Responsive Space is Affordable, Organic & Responsive!**



*U.S. Army Space and Missile Defense Command /*

*Army Forces Strategic Command*



*JFCC IMD*

## ***Working Together – Jointly!***

- The warfighter needs to be involved from the beginning...and kept engaged through each step in the process.
- Government does not have all the answers...industry is vital to the solution.
- Capabilities must catch up with requirements.



***The Warfighter is the centerpiece of all we do!***