

Keynote Address

2004 TACOM APBI “Government and Industry Unite to Support our Forces”

**The Honorable Claude M. Bolton, Jr.
Assistant Secretary of the Army
(Acquisition, Logistics and Technology) and
Army Acquisition Executive
October 14, 2004**

Trivia Question



**The Heaviest Tank Ever Built
Was the German Maus II.
How Much Did It Weigh?**

Trivia Answer

192 Tons

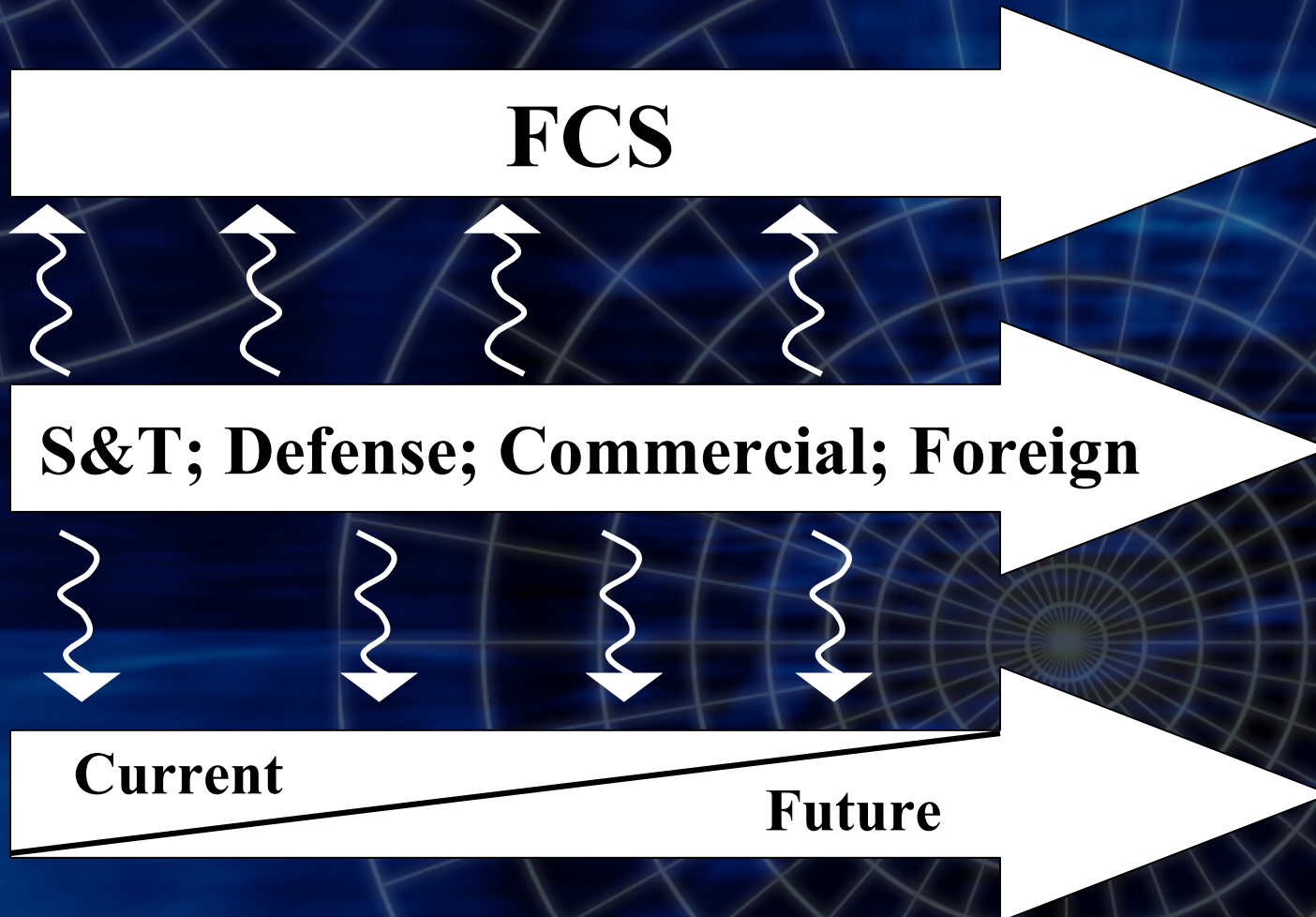
Trivia Question

When was the last time that Department of Defense spending was 2% of our nation's Gross Domestic Product?

(Hint: Trick Question)

Current → Future Force

What Is Our Strategy For Getting There?



Interceptor Body Armor (IBA)

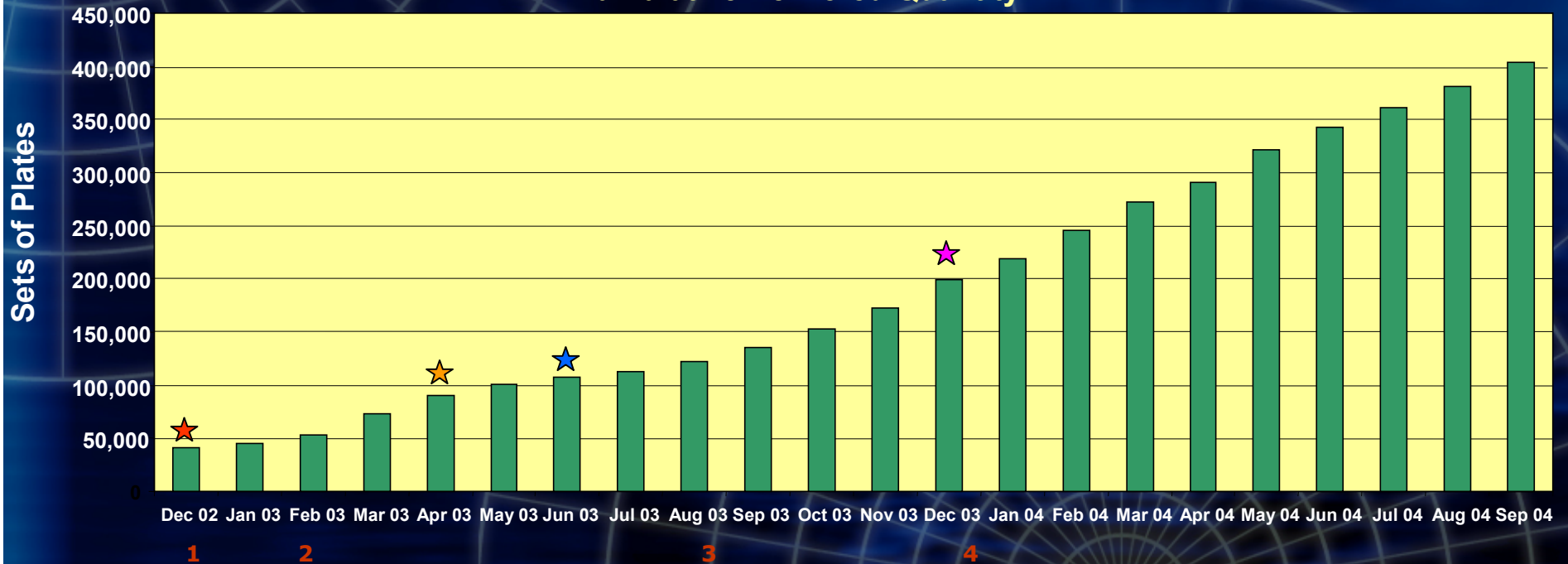
IBA = Outer Tactical Vest (OTV) + Ballistic Inserts (set)



Ballistic Inserts are either the 4lb Small Arms Ballistic Inserts (SAPI) containing Spectra-Shield or slightly heavier plates made from Kevlar or like products

Ballistic Plate Sets (SAPI Sets)

Cumulative Delivered Quantity



1. Producers included Simula, Ceradyne and ArmorWorks

2. Point Blank added

3. Protech added

4. Force One added



Army ramped production to the maximum rate to field deploying combat units before deployment into Iraq. Decision made to waive weight requirement.



Army successfully met the operational requirement of distributing IBA to all Combat Forces prior to deployment into Iraq.



Decision to distribute IBA to all Soldiers and DoD Civilians.



CSA decision to keep production ramped at 25K sets per month until entire Army requirement is complete.

'Fast and the Furious' UAH Production Acceleration



*Estimated

'Days of Thunder'

Add-on Armor (AoA) Kit Testing and Production



Rapid Equipping Force (REF)

REF IS an innovative provider of state-of-the-art equipment not available to commanders through the regular fielding process.



PACKBOT



Translators



Wellcam

REF Force Protection Package



EXSPRAY



FIBERSCOPE



MAGNETOMETERS



FERROTRACE



GE ITEMIZER3

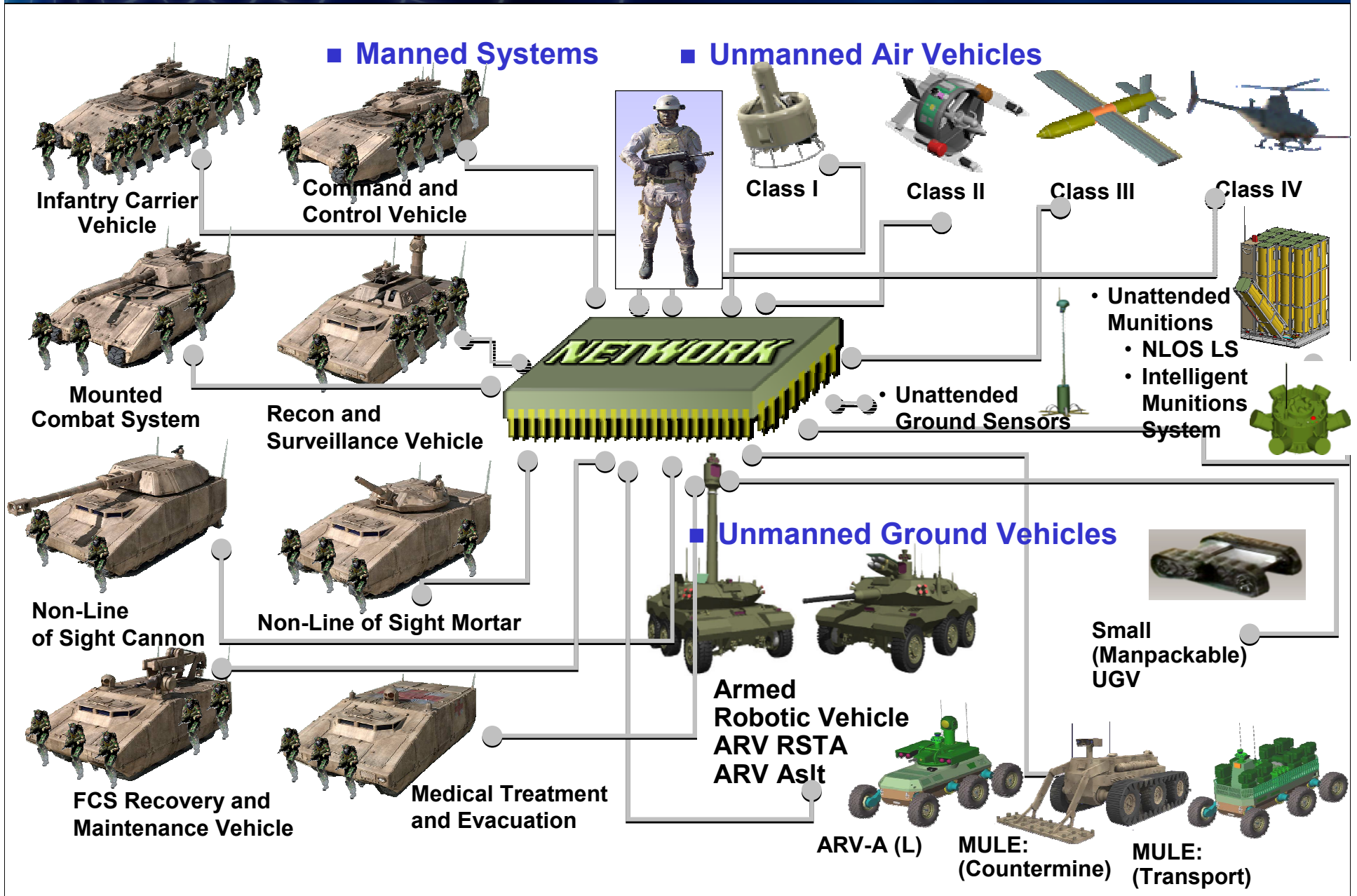


WALKTHROUGH

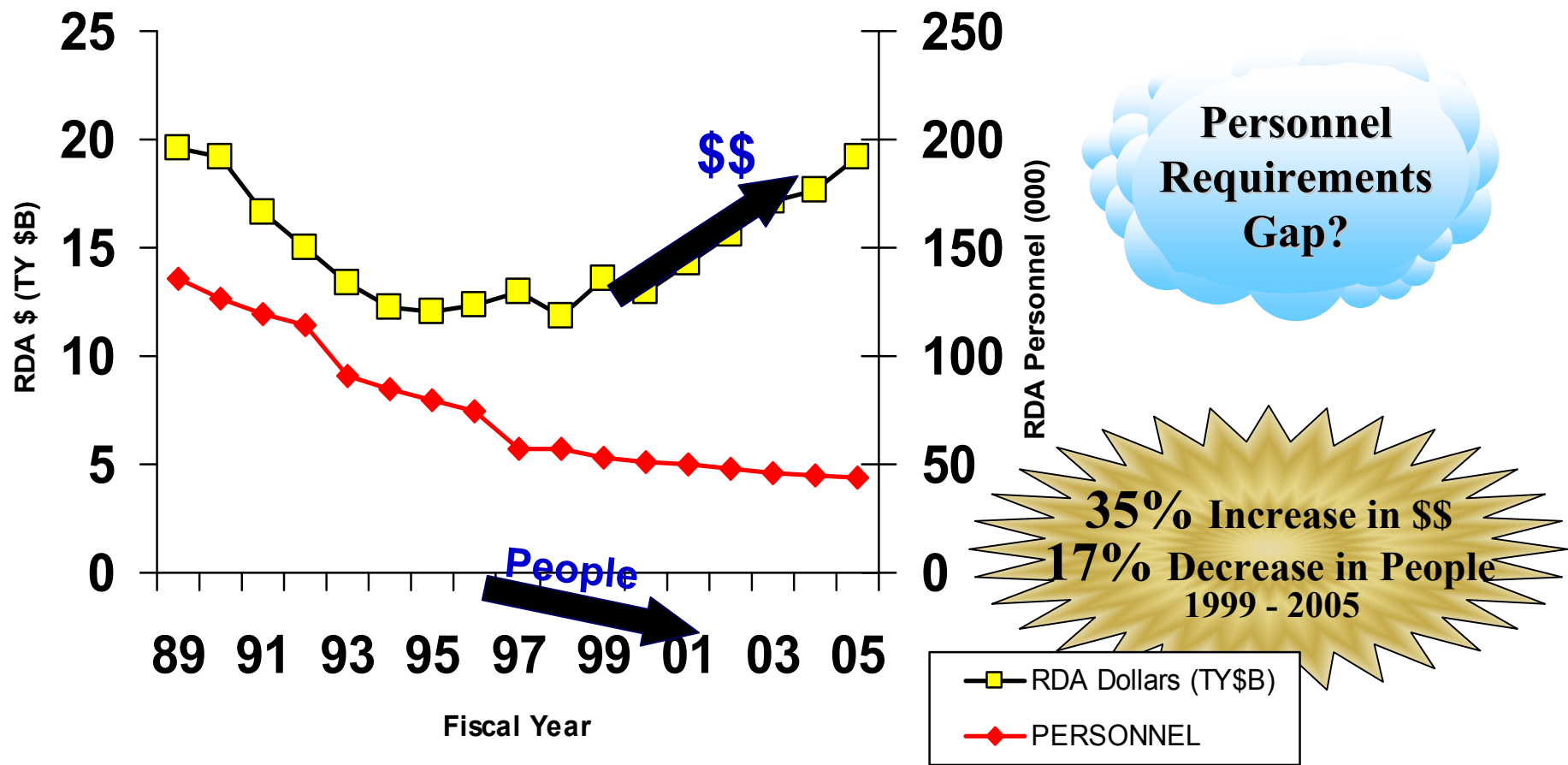
Network-Centric Stryker Brigades



Future Combat Systems



Army Research, Development & Acquisition RDA Manpower & Funding Trends



•RDA \$ are President's Budget Future Year Defense Program (FYDP) data. Data obtained from the Army's FYDP database.
 *FY 1998-2005 PB 2000 FYDP data.
 Prior Year data (FY89-97) is FYDP data reflecting 30 September actuals.

Things On My Mind

We're Meeting Our Tactical Industrial Requirements, Now We Need to Address Our Strategic Industrial Requirements.

How Do We Collapse the Response Time From Weeks, Months, and Years to Days and Weeks?

Trivia Question

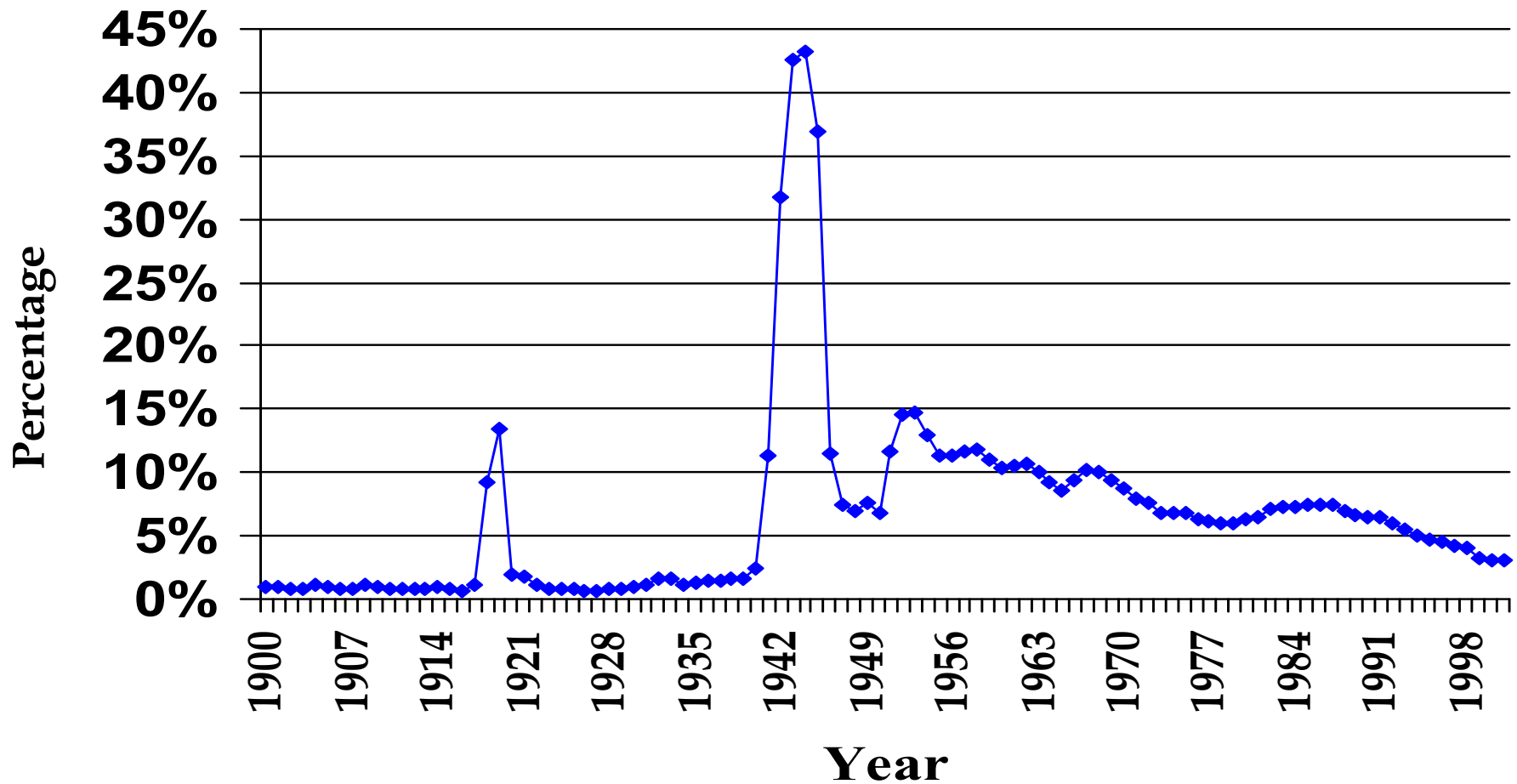
When was the last time that Department of Defense spending was 2% of our nation's Gross Domestic Product?

The Answer

Never; Previously known as
Department of War and
Gross National Product.

National Defense As Percentage of GNP/GDP

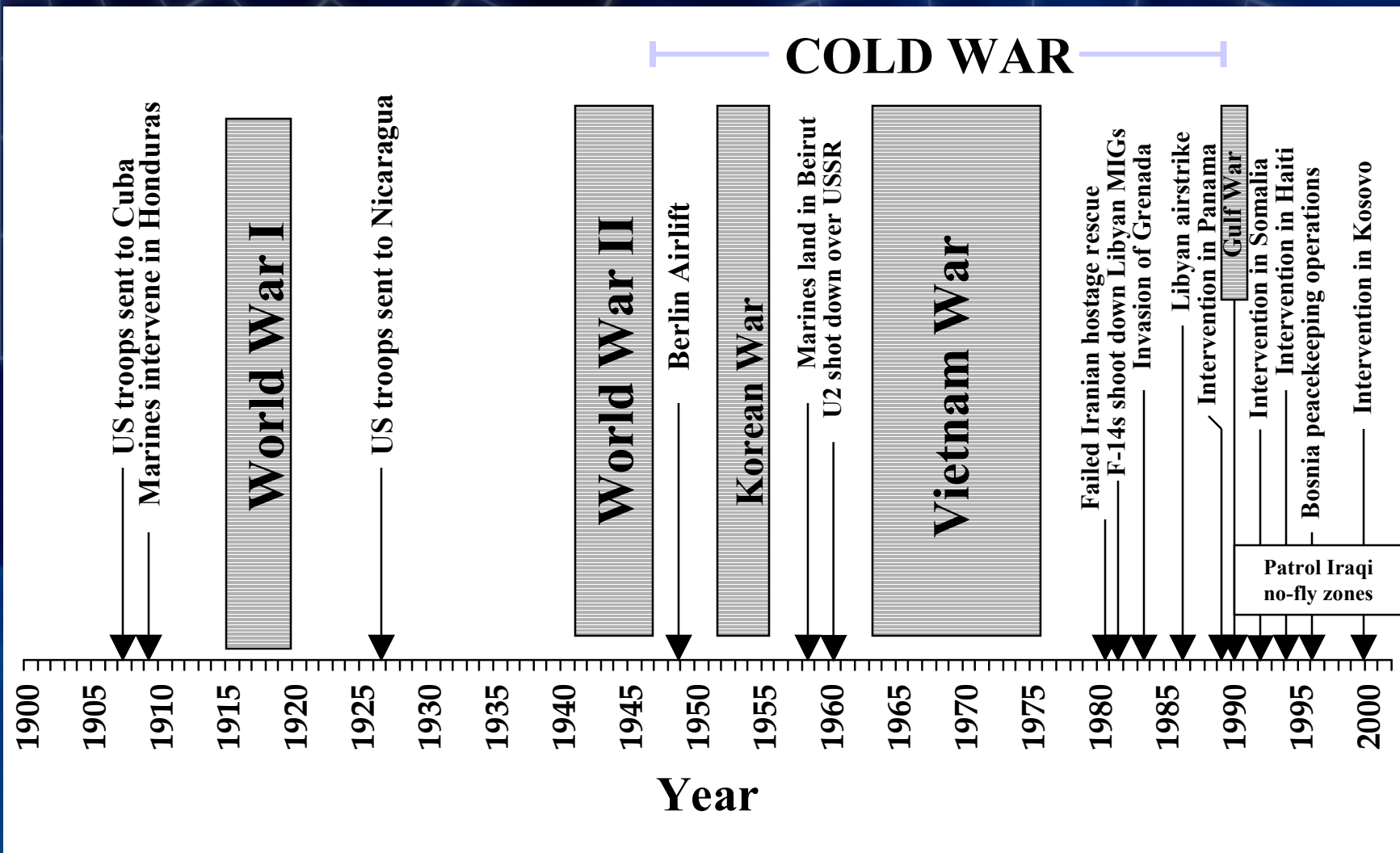
Since 1900



Sources: DOC's BEA Survey of Current Business, August 1998
OUSD(C) National Defense Budget Estimates for FY2000 (projections)

Conflicts with U.S. Involvement

Since 1900



Challenge

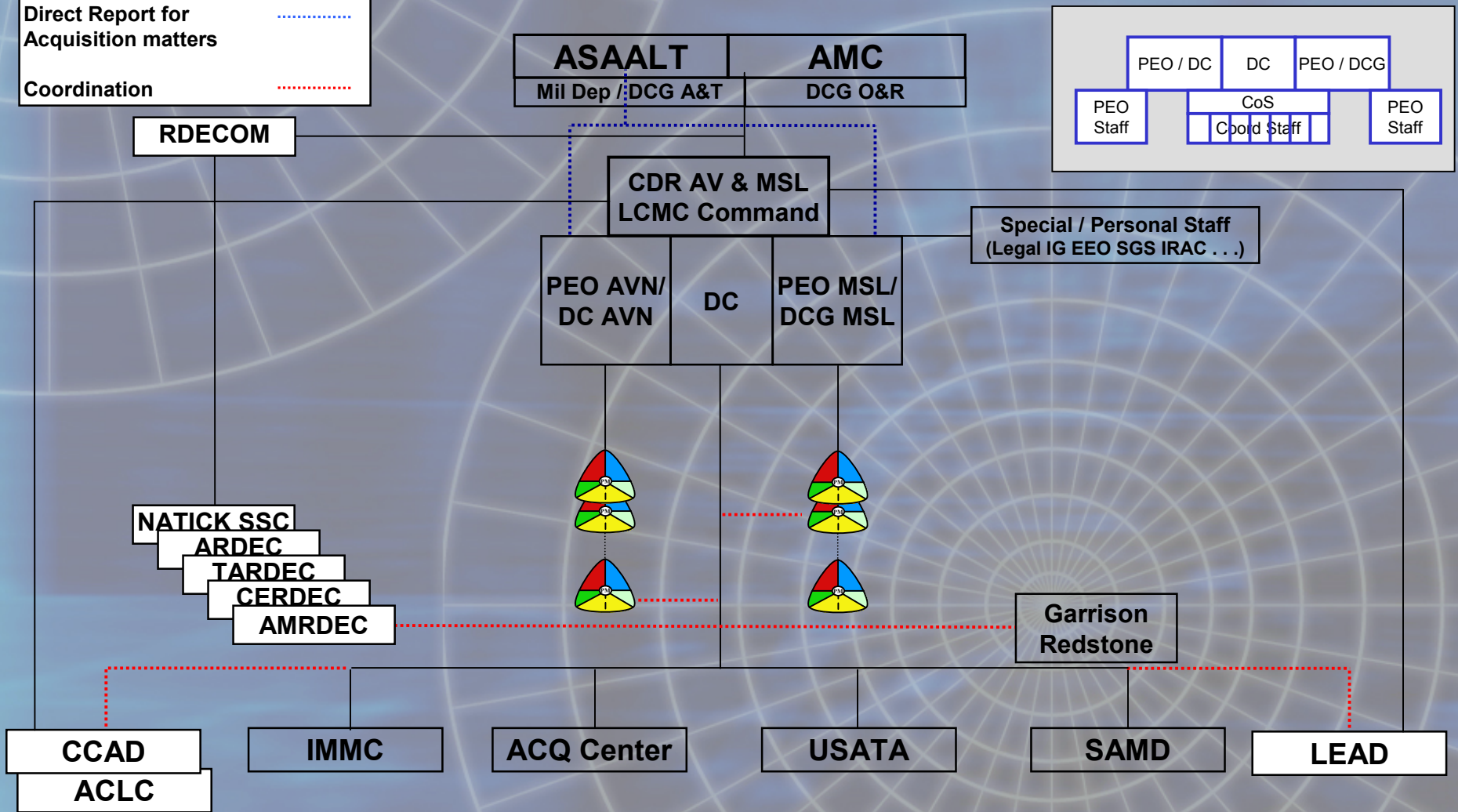
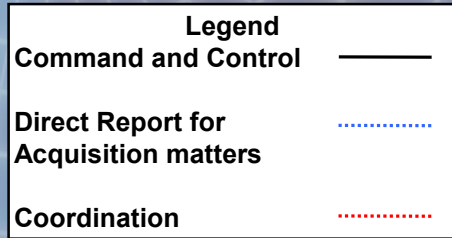
How do we maintain a world class military on 2% GDP with 100 years of history against us?

Solution

**We must change the way
DoD does business**

**a.k.a - Acquisition & Logistics Excellence . . .
Transformation**

Organizational Diagram



Command formed based on Bolton-Kern MOA & implementing instructions

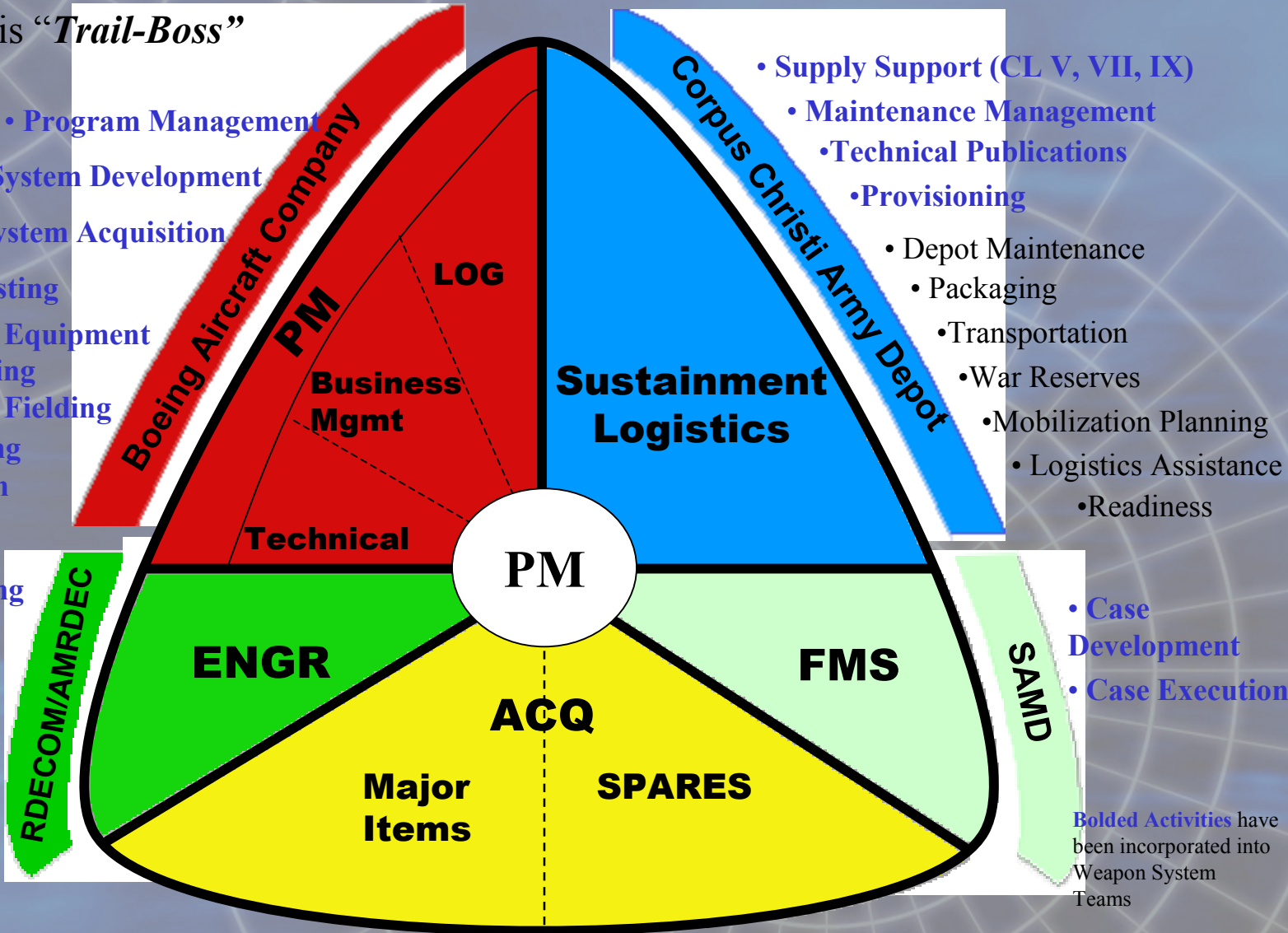
Aviation and Missile Life-Cycle Management Command

PM Is The Total Life-Cycle System Manager

PM is "Trail-Boss"

- Program Management
- System Development
- System Acquisition
- Testing
- New Equipment Training
- Materiel Fielding
- Engineering
- Configuration management

- System Engineering
- Air Worthiness
- Quality
- Industrial Base Planning
- Technical Data Management



- Acquisition Planning
- Contracting
- Contracting Management

- Supply Support (CL V, VII, IX)
- Maintenance Management
- Technical Publications
- Provisioning
- Depot Maintenance
- Packaging
- Transportation
- War Reserves
- Mobilization Planning
- Logistics Assistance
- Readiness

- Case Development
- Case Execution

Bolded Activities have been incorporated into Weapon System Teams

Life-Cycle Management Commands

- **Enhance synergy and effectiveness of the Army Acquisition, Logistics and Technology communities working together to get products to the Soldier faster, make good products even better, and minimize life-cycle cost.**
- **Provide an integrated, holistic approach to product development and system support.**
- **Position the workforce to meet future needs.**
- **Focus metrics on improving quality, reducing cost, meeting schedule, balancing risk and responsiveness to the Soldier.**



2004 TACOM APBI



**Government and Industry Unite
to Support Our Forces**