

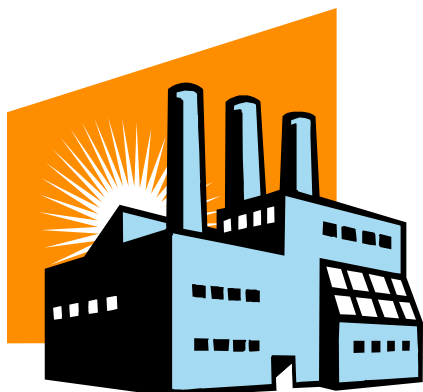


TACOM
Lethality, Survivability, Mobility and
Sustainment for America's Army

Leadership
Teaming
Communication
Employee Support
Strategic Thinking
Organizational Climate

AMC INDUSTRIAL ENTERPRISE

Industry's Partner in the Defense Industrial Base



ORGANIC



COMMERCIAL

Committed to Excellence - Supporting America's Warfighters

AMC INDUSTRIAL ENTERPRISE

Outline

What is the AMC Industrial Enterprise?

Background

LCMC Industrial Sectors

LCMC Organic Facilities

TACOM-GSIE Facilities & Industrial Sectors

TACOM Industrial Base

Public/Private Partnerships

Where we are Headed

Points of Contact

AMC INDUSTRIAL ENTERPRISE

WHAT IS THE AMC INDUSTRIAL ENTERPRISE?

**A STRUCTURED APPROACH TO MANAGE
THE AMC INDUSTRIAL FACILITIES.**



AMC INDUSTRIAL ENTERPRISE

Background

- **Memorandum of Agreement dated 2 Aug 04 between Assistant Secretary of the Army for Acquisition, Logistics and Technology and Commander, U.S. Army Materiel Command**
- **Formalize the Army's Life Cycle Management (LCMC) Initiative**
- **Key Objectives**
 - **Products to Soldier faster**
 - **Make good products even better**
 - **Minimize Life Cycle Costs**
 - **Enhance synergy and effectiveness of the Army Acquisition, Logistics and Technology communities**

AMC INDUSTRIAL ENTERPRISE

Background

- **Create Life Cycle Management Commands by aligning AMC Major Subordinate Commands (MSC) with the Program Executive Office**

LCMC

Formerly MSC

Aviation/Missile

PEO Tactical Missiles

PEO Aviation

AMCOM

Communications/Electronics

PEO IEW&S

PEO C3T

CECOM

Soldier/Ground Systems

PEO Soldier

PEO GCS

PEO CS & CSS

TACOM

Joint Ammunition

PEO Ammo

JMC

AMC INDUSTRIAL ENTERPRISE

LCMC INDUSTRIAL SECTORS



AMCOM

- Missiles
- Aviation
 - Fixed Wing
 - Rotary Wing

CECOM

- Communications
- Electronics
- Radar Systems



JMC

- Ammo



TACOM

- Combat Vehicles
- Tactical Vehicles
- Small Caliber Weapons
- Medium Large Caliber Weapons
- Chem Bio
- Petroleum & Water Systems
- Watercraft
- Soldier Systems
- Locomotives



AMC INDUSTRIAL ENTERPRISE

LCMC FACILITIES

AMCOM

- GOGO
Corpus Christi AD
Letterkenny AD

CECOM

- GOGO
Tobyhanna AD

TACOM

- GOGO
Anniston AD
Red River AD
Sierra AD
Rock Island
Arsenal
Watervliet
Arsenal
- GOCO
Joint Combat
System Center –
Lima

JMC

- GOGO
Blue Grass AD
Tooele AD
Hawthorne AD
Crane AAA
McAlester AAP
- GOCO
Holston Iowa
Lake City Mississippi
Lone Star Louisiana
Milan
Radford
Kansas
Riverbank
Scranton



U.S. Army Materiel Command - LCMC FACILITIES -





TACOM-GSIE MANAGED FACILITIES AND INDUSTRIAL SECTORS THEY SUPPORT



ANNISTON ARMY DEPOT



Abrams

■ REQUIREMENT: Maintain a Combat Ready, Deployable Force

Abrams, M88, M109 Paladin, FAASV, M119 & M198 Towed Howitzers, M9ACE, M113FOV, AVLB, M16 Rifle, MK19 Grenade Launcher

■ SUPPORTING CORE CAPABILITIES

➤ Combat Vehicle Depot Maintenance

- ✓ Vehicle Teardown
- ✓ Component Reclamation
- ✓ Vehicle Assembly/Test

Field Support Teams



M9 ACE



M16

➤ Small Arms Maintenance/Repair/Modification

➤ Bridging Systems Depot Maintenance

Number of Employees: 2857 Gov't

■ KEY PROCESSES AND SKILLS

➤ Processes

- ✓ Armor Welding
- ✓ Special Armor Repair
- ✓ Vehicle Machining

➤ Skills

- ✓ Ballistic Welder
- ✓ Heavy Mobile Equipment Mechanic
- ✓ Machine Operator/Machinist
- ✓ Electronic Integrated Systems Mechanic
- ✓ Tool & Die Maker
- ✓ Pneudraulic Systems Mechanic

DLH = Direct Labor Hours

Comments: GDLS partnered with ANAD for Stryker Production. Honeywell on site mfg facility. Three strategic partnerships: DLA Supply Warehouse Activity, Chemical Weapons Demil, Conventional Ammo Storage. Commercial Quality System for Turbine and Reciprocating Engine Shops – ISO 9002 Registered.

RED RIVER ARMY DEPOT



- **REQUIREMENT: Maintain a Combat Ready, Deployable Force**
Bradley FOV, MLRS Chassis, HEMTT, HMMWV, SEE, Construction Equipment, Patriot Missile Recertification

▪ SUPPORTING CORE CAPABILITIES

➤ Bradley and Tactical Vehicle Depot Maintenance

- ✓ Vehicle Teardown
- ✓ Component Reclamation
- ✓ Vehicle Assembly/Test



➤ Combat Vehicle Rubber Products Rebuild

- ✓ Roadwheels
- ✓ Track

➤ Missile Re-certification (Patriot)

Number of Employees: 1629 Gov't

▪ KEY PROCESSES AND SKILLS

➤ Processes

- ✓ Armor Welding
- ✓ Rubber Injection Molding

➤ Skills

- ✓ Ballistic Welder
- ✓ Combat Vehicle Mechanic
- ✓ Machinist
- ✓ Electronics Technician
- ✓ Electro-Optic Instrument Technician



DLH = Direct Labor Hours

Comments: Only qualified Rubberizer for M1 roadwheels. Two strategic partnerships: DLA Supply Warehouse Activity, Conventional Ammo Storage. Commercial Quality System – ISO 9000 Registered.

SIERRA ARMY DEPOT

■ REQUIREMENT: Maintain a Combat Ready, Deployable Force

Reserve Component Hospital Decrement, Force Provider Modules, Logistic Support Equipment, Water/Fuel Distribution Systems, Pharmaceutical Distribution Center, Strategic Configured Loads



■ SUPPORTING CORE CAPABILITIES

➤ Care of Supplies in Storage (COSIS)

- ✓ High Desert Storage
- ✓ Rapid Delivery Logistics (Air, Rail, Land)



■ KEY PROCESSES AND SKILLS

➤ Processes

- ✓ Long Term Storage
- ✓ Short Term Storage
- ✓ Packaging/Containerization

➤ Skills

- ✓ Powered Support Systems Mechanic
- ✓ Packaging Specialist

Number of Employees: 600 Gov't

DLH = Direct Labor Hours

Comments: Extensive outdoor high desert storage areas. Supports MEDCOM/USAMMA/TACOM Troop Training exercises. On site air field can accommodate up to and including C5A cargo planes.

ROCK ISLAND ARSENAL

- **REQUIREMENT: Maintain a Combat Ready, Deployable Force**
Abrams, M198 Howitzer, M119 Howitzer

- **SUPPORTING CORE CAPABILITIES**

- **Gun Mount, Recoil Mechanism and Towed Artillery Manufacturing**

- ✓ **Component Fabrication**
- ✓ **Assembly of Subsystems**
- ✓ **Machining**

- **KEY PROCESSES AND SKILLS**

- **Processes**

- ✓ **Castings**
- ✓ **Welding**
- ✓ **Surface Treatment**
- ✓ **Material Forming**
- ✓ **Reverse Engineering**

- **Skills**

- ✓ **Metallurgist**
- ✓ **Artillery Repairer/Equipment Installer**
- ✓ **Machine Operator/Machinist**
- ✓ **Welder**
- ✓ **Engineers**

Number of Employees: 1195 Gov't



Abrams

DLH = Direct Labor Hours

Comments: Manufactures Special Purpose Vehicles for TACOM: Petroleum Quality Analysis System, Forward Repair System, Contact Maintenance Truck and Repair Parts Hospital. Produces Tool sets and BII for TACOM. There are over 50 tenants on Rock Island Arsenal.

WATERVLIET ARSENAL

REQUIREMENT: Maintain a Combat Ready, Deployable Force

Abrams, Stryker, M198 Howitzer, M119 Howitzer, M109 Howitzer, M777 Howitzer, 60mm, 80mm and 120mm Mortars

SUPPORTING CORE CAPABILITIES

Cannon, Gun Tube and Mortar Manufacturing

- ✓ Component Fabrication
- ✓ Subsystem Assembly
- ✓ Machining

Field Support Teams

KEY PROCESSES AND SKILLS

Processes

- ✓ Rotary Forge
- ✓ Chrome Plate
- ✓ Continuous Heat Treat
- ✓ Swage
- ✓ Composite Manufacturing
- ✓ Stress Relieve/Shrinkage

Skills

- ✓ Machinist
- ✓ Engineer
- ✓ Metallurgist
- ✓ Tool & Die Maker

Mortar



Stryker



Lt Wt 155



Number of Employees: 484 Gov't

DLH = Direct Labor Hours

Comments: Commercial Quality System – ISO 9001-2000 Registered.

JOINT COMBAT SYSTEM CENTER - LIMA

- **REQUIREMENT: Maintain a Combat Ready, Deployable Force**

Abrams, Stryker, Wolverine

- **SUPPORTING CORE CAPABILITIES**

- **Structure Fabrication**
- **Vehicle Assembly and Test**
- **Special Armor Manufacturing**



- **KEY PROCESSES AND SKILLS**

- **Processes**

- ✓ Plasma and Flame Cut
- ✓ Hull Machining
- ✓ Turret Machining
- ✓ Robotic Welding
- ✓ Armor Welding

- **Skills**

- ✓ Machinist/Machine Operators
- ✓ Ballistic Welder
- ✓ Assemblers
- ✓ Tool & Die Maker



Comments: Currently performing structure fabrication on the AAV for the USMC. Government Owned-Contractor Operated facility. Currently operated by GDLS.

- Requirements
- Funding

TACOM INDUSTRIAL BASE

TACOM Managed Commodities

Combat



Small Caliber Weapons



Tactical



Medium/Large Caliber Weapons



Watercraft



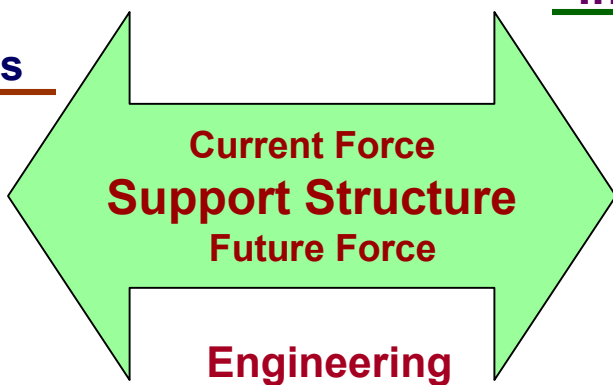
Petroleum & Water Systems



Soldier Systems



Chem Bio



Engineering
Technology
Design/Development
System Integration
ESIP
Field Problem Analysis

Manufacturing
Components
Purchased Finished
In House Fabrication
Structures
Vehicle Assembly & Test

Logistics
Vehicle Maintenance
Manuals
Training
Fielding/Hand off
Spares

Industrial Base Providers (i.e.)

Prime Contractors

GDLS, UDLP, Oshkosh, FNMI
Boeing, Keco, Colt's, Lakeshore,
Stewart & Stevenson, GD ATP,
Hamilton Sundstrand

Vendors/Subcontractors

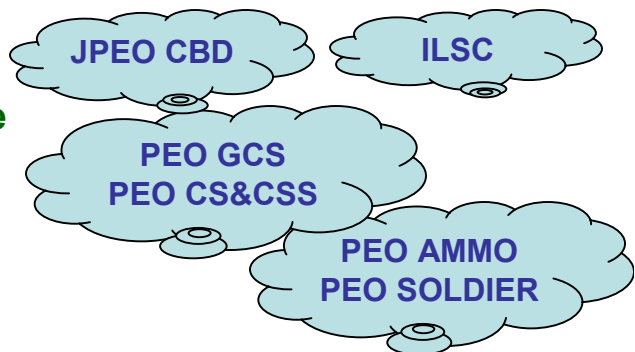
Allison, Honeywell, Goodyear
Cummins, DOE, iRobot,
Lockheed Martin,
Northrop Grumman

Organic Facilities

Anniston AD
Red River AD
Sierra AD
Rock Island Arsenal
Watervliet Arsenal
Lima Army Tank Plant



Customers



AMC INDUSTRIAL ENTERPRISE

Types of Public/Private Partnerships

- **Direct Sales**
- **Facility Use Agreements**
- **Work Share Agreements**
- **Subcontracting**
- **Center of Industrial and Technical Excellence (CITE)**
- **Armament Retooling and Manufacturing Support Programs (ARMS)**
- **Arsenal Support Program Initiative (ASPI)**
- **Cooperative Research and Development Agreements (CRADA)**



AMC INDUSTRIAL ENTERPRISE

Major Partnerships

- **Anniston Army Depot**
 - **UDLP – M113 Upgrades**
 - **GDLS – Abrams SEP; Abrams AIM, Stryker**
 - **Honeywell – AGT 1500 Engine**

- **Red River Army Depot**
 - **UDLP – Bradley FOVs**
 - **Oshkosh - HEMTT**
 - **Stewart & Stevenson - FMTV**
 - **Lockheed Martin - Missiles**
 - **Lear Siegler - Manpower**

AMC INDUSTRIAL ENTERPRISE

Major Partnerships (Cont'd)

- **Rock Island Arsenal**
 - **GDLS – GFE Supplier – Abrams Gun Mount**
 - **Focus Hope – Subcontractor – Repair Parts Hospital**
 - **OEM – M119 Towed Howitzer**
 - Contact Maintenance Truck**
 - Petroleum Quality Analysis System (PQAS)**
 - Forward Repair System**

AMC INDUSTRIAL ENTERPRISE

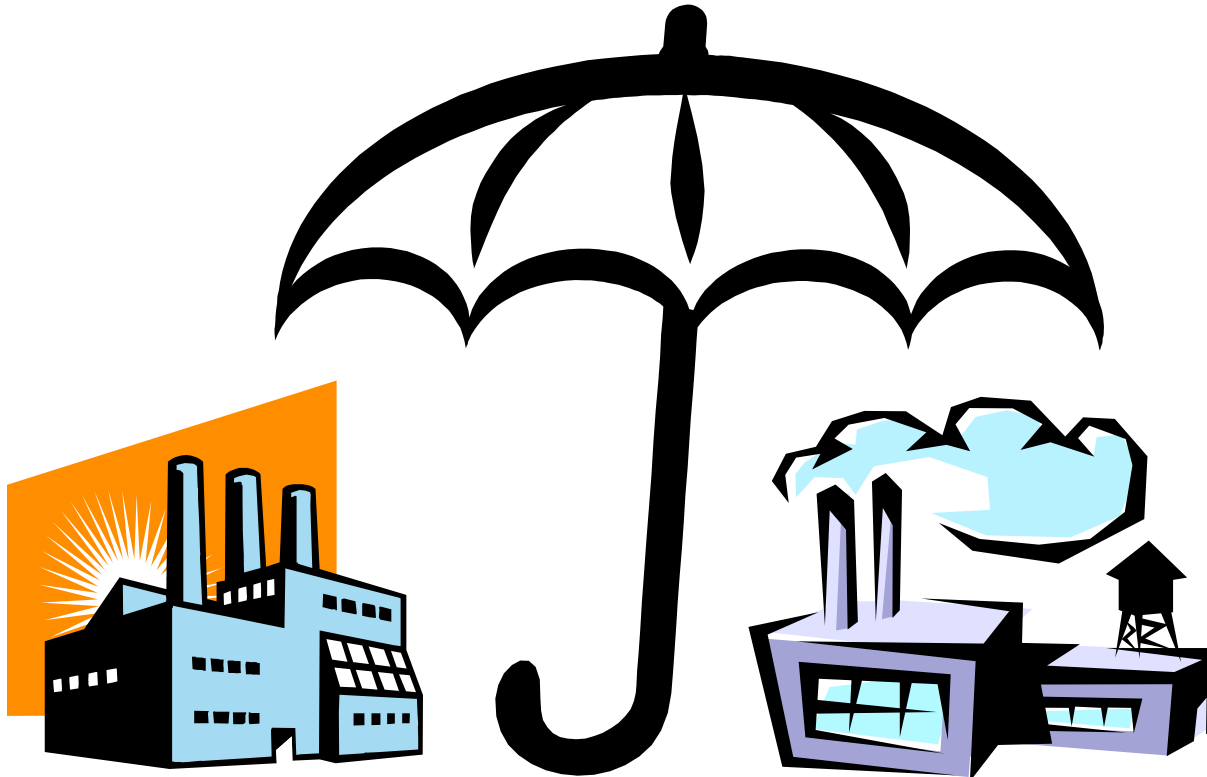
Major Partnerships (Cont'd)

- **Watervliet Arsenal**
 - **GDLS – GFE Supplier – Abrams Cannon**
Subcontractor – Stryker MGS Cannon
Subcontractor – FCS Gun System
 - **UDLP – Subcontractor – FCS Gun System**
Subcontractor – M109 Cannons
Subcontractor – FCS Gun System
 - **BAE – Subcontractor – M777 Lightweight Howitzer Cannon**

AMC INDUSTRIAL ENTERPRISE

Where We Are Headed

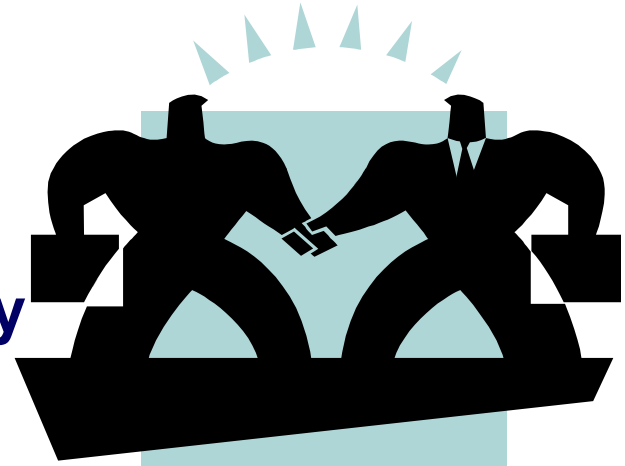
- **AMC Industrial Enterprise**
 - **All AMC managed facilities under one umbrella**



AMC INDUSTRIAL ENTERPRISE

Why?

- **Reduce Costs**
- **Increase Readiness**
- **Standardize Operations**
- **Preserve Core Capabilities**
- **Eliminate Un-needed Capacity**
- **Increase Partnerships with Industry**



INDUSTRIAL BASE POINTS OF CONTACT

PRINCE YOUNG, JR.

TACOM Industrial Base Advocate

e-mail: youngp@tacom.army.mil

Telephone Number: (586) 574-7216

BILL HILL

Industrial Base Team Leader

e-mail: hillb@tacom.army.mil

Telephone Number: (586) 574-7051

MAJOR SUBORDINATE COMMANDS

AMCOM – Aviation & Missile Command

CECOM – Communication & Electronics Command

TACOM – Tank Automotive & Armaments Command

JMC – Joint Munitions Command