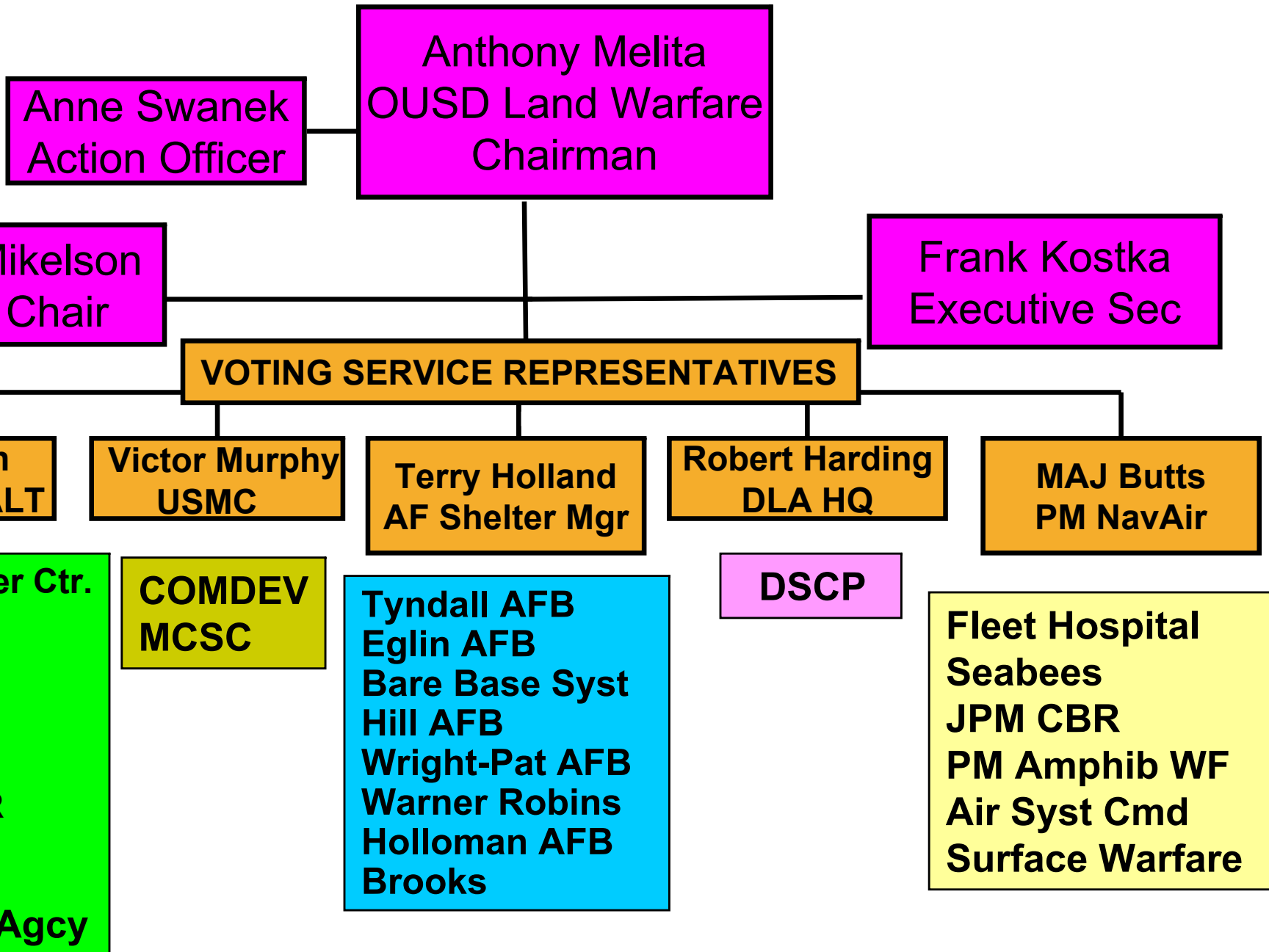


JOINT COMMITTEE ON TACTICAL SHELTERS (JOCOTAS)

- **Formed in 1975 under SEC DEF direction**
 - Tactical shelters house facilities; containers carry 'stuff'
- **Purpose:**
 - Reduce/eliminate duplication of tactical shelter R&D
 - Create DOD standard family of tactical shelters
 - Maximize usage of DOD standard shelter family
 - Share technical and program information
- **Authority:**
 - AR 70-59 / AFR 80-8 / MCO 3920.5A / OPNAVINST 3900.27B
 - Charter written 19 Apr 2000

JOINT COMMITTEE ON TACTICAL SHELTERS (JOCOTAS)



JOINT COMMITTEE ON TACTICAL SHELTERS (JOCOTAS)

Activities:

- Sponsor two Technical Working Group (TWG) meetings/year
- Sponsor DOD-Shelter Industry Meeting/Exhibition every 2 yr



Port Hueneme, CA 2-4 May 2005

400+ attendees

45 exhibitors

17 briefings

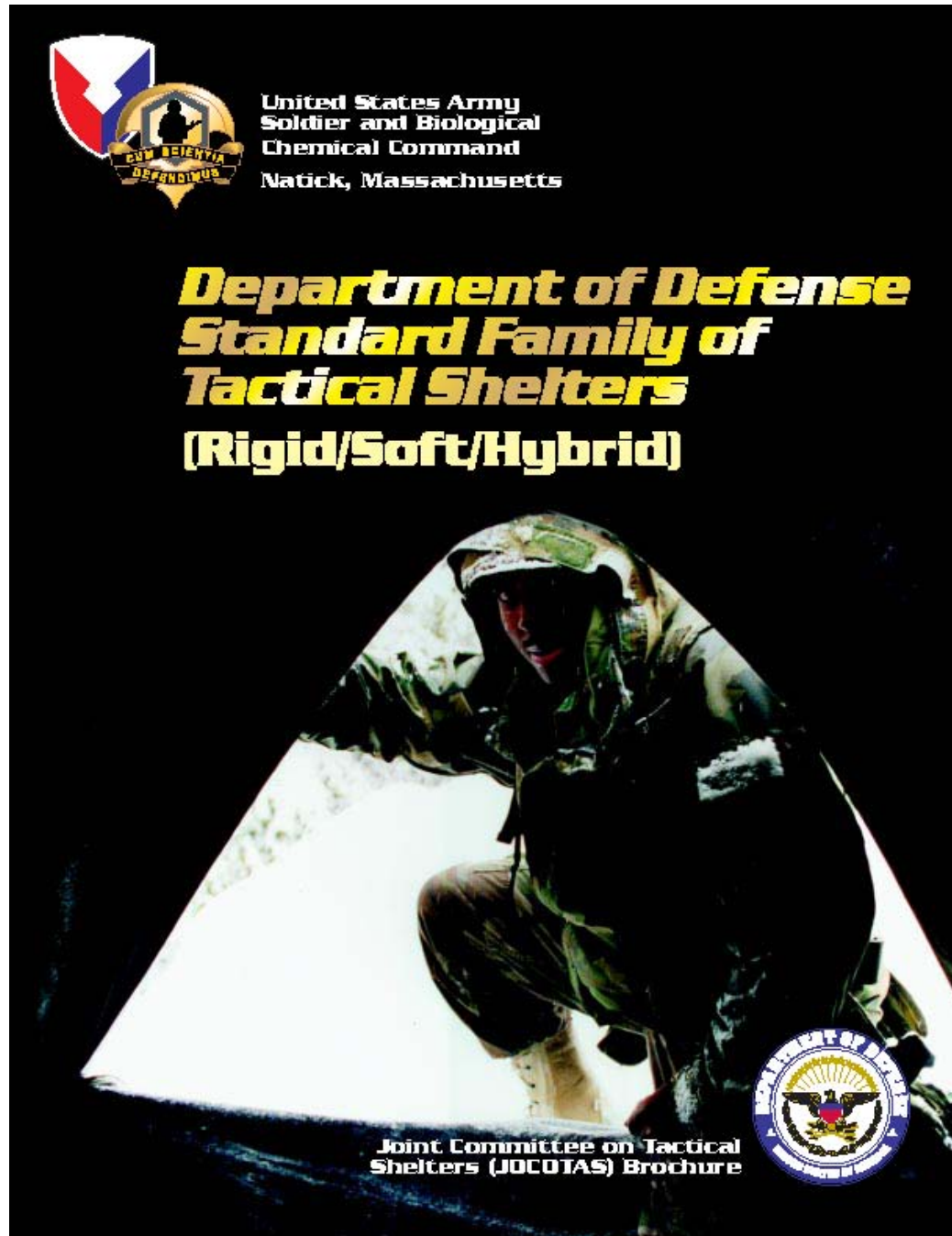
JOINT COMMITTEE ON TACTICAL SHELTERS (JOCOTAS)

Activities:

- Prepare Annual Joint Service 5-Year RDTE Program Plan
- Publish DOD Standard Family of Tactical Shelters Brochure
- Maintain JOCOTAS Website
 - <http://www.natick.army.mil/soldier/JOCOTAS/>
- Support ASTM E06.53 Subcommittee on Materials and Processes for Durable Rigid Wall Shelters (since 1978)
 - 26 specs & standards www.astm.org
- Develop/support CSC re-certification course for ISO shelters
- Review waivers, recommend action to OUSD

JOINT COMMITTEE ON TACTICAL SHELTERS

JOCOTAS
Brochure



JOINT COMMITTEE ON TACTICAL SHELTERS

Non-Expandable Rigid Wall Shelters

S-788/G, Shelter, Electrical Equipment, Lightweight



S-788/G Mounted on HMMWV (Army)

- **Description:** Replacement for S-250/G shelter designed for housing C4I battlefield systems.
- **Dimensions:** Interior 8'-3.5"L x 6'-9.5"W x 5'-4.5"H, Exterior 8'-8"L x 7"W x 5'-7"H
- **Three S-788/G Versions:**
 - 1) Type I - Basic Shelter, Empty: NSN 5411-01-357-3582
 - 2) Type II - Basic Shelter w/Tunnel, Hatch: NSN 5411-01-333-5941
 - 3) Type III - Basic Shelter w/Tunnel Only: NSN 5411-01-357-3583
- **Weight:** Type I - 608 lbs., Type II - 650 lbs., Type III - 643 lbs.
- **Payload:** 3300 lbs.
- **Construction:** Kraft Paper Honeycomb Core
- **Prime Mover:** M1097/M1113 HMMWVs
- **EMI Protection:** 60 dB
- **LIN:** S01563

S-832/G, Shelter, Non-Expandable, Rigid Wall, Integrated



S-832/G (Army) SICPS Rigid Wall Shelter

- **Description:** Standardized Integrated Command Post System Rigid Wall Shelter (SICPS RWS) is a transportable HMMWV mounted shelter integrated with on-board power, environmental control unit (ECU), EMI and CB protection, equipment racks, and power/signal wiring. NSN 5411-01-436-3326.
- **Dimensions:** Interior 8'-3.5"L x 6'-9.5"W x 5'-4.5"H, Exterior 8'-8"L x 7"W x 5'-7"H
- Consists of 10 kW Power Unit, 18K BTUH ECU
- **Construction:** Kraft Paper Honeycomb Core
- **Prime Mover:** M1097/M1113 HMMWVs
- **EMI Protection:** 60 dB

Shelter, Tactical, Nonexpandable



S-781/G, S-782/G Non-Expandable Tactical Shelter

- **Description:** Non-Expandable 20 Ft ISO Shelter.
- **Dimensions:** Interior 19'-1"L x 7'-7"W x 7'-1"H, Exterior 20'L x 8"W x 8"H
- **Non-Expandable ISO Versions:**
 - 1) S-781/G - 60 Amp Service: NSN 5411-01-136-9837
 - 2) S-782/G - 100 Amp Service: NSN 5411-01-294-6390
- **Weight:** 3900 lbs.
- **Payload:** 11,100 lbs.
- **Gross Weight:** 15,000 lbs.
- **Construction:** Kraft Paper Honeycomb Core
- **LIN:** S00860
- Includes Lights, Power Entrance Panel, Circuit Breaker Panel, Duplex Receptacles, Leveling Jacks
- Single Personnel Door on One End

JOINT COMMITTEE ON TACTICAL SHELTERS (JOCOTAS)

Status - Rigid Wall Shelters

- Reduced 200+ DOD shelter types to 20
- DOD has saved \$\$ millions in:
 - Eliminating duplication in R&D
 - Logistic supportability costs
 - Multi-service buys of shelters
- Developed engineering design criteria for rigid wall shelters
 - ASTM E-1925
- Assured shelters are compatible with transportation system
- Granted waiver requests for JSLNBCRS, SGRS

JOINT COMMITTEE ON TACTICAL SHELTERS (JOCOTAS)

The standard Rigid Wall Shelter family

Army

S-250

S-280

S-788

S-832

S-842

ISO 1:1

ISO 2:1

ISO 3:1

MERWS

Navy

MF A

MF B

MF A SO

MF B SO

MF B SO(M)

MF C SO

INU

Marine

ISO 10'

ISO 20'

ISO K

Air Force

S-530

Photos & specs in brochure
on JOCOTAS website

JOINT COMMITTEE ON TACTICAL SHELTERS (JOCOTAS)

Evolution:

- Added soft wall shelters (22) in 1995
- Added hybrid shelters & specialty shelters
- Working toward joint developments
 - Emphasizing long range requirement planning
 - Search for common solutions to identified user needs
 - Ancillary equip: jacks, passageways, transport equip
- Advance state-of-the-art in shelter design
- Procure shelters in the most streamlined way
- Forum for interaction between DOD and industry

JOINT COMMITTEE ON TACTICAL SHELTERS (JOCOTAS)

The standard Soft Wall Shelter family

	<u>Army</u>	<u>Marine</u>	<u>Air Force</u>
GP-Small	Arctic (10)	Cmd Post	Dome
GP-Med	Arctic (5)	ECWS (4)	SSS
GP-Large	MCPS	Combat (2)	MSS
MGPTS	SCT		
LEWS	Shelter half		
TEMPER	Fritsche		
LME	16x16		
LAMS	16x16 sect		

Good website for tent info:

<http://ct.dscp.dla.mil/ctinfo/basecamp>

JOINT COMMITTEE ON TACTICAL SHELTERS (JOCOTAS)

Hybrid Shelters

Army – CBPS

Air Force – Gen Purpose Shelter (Bare Base)

Specialty Items

Cargo Bed Covers: type I, II, III, IV

Small Unit Solar Shade 2- and 4-soldier

Ammunition Solar Cover Type I, II

JOINT COMMITTEE ON TACTICAL SHELTERS (JOCOTAS)

195 CBPS Produced



Tech base: 1-piece woven airbeam



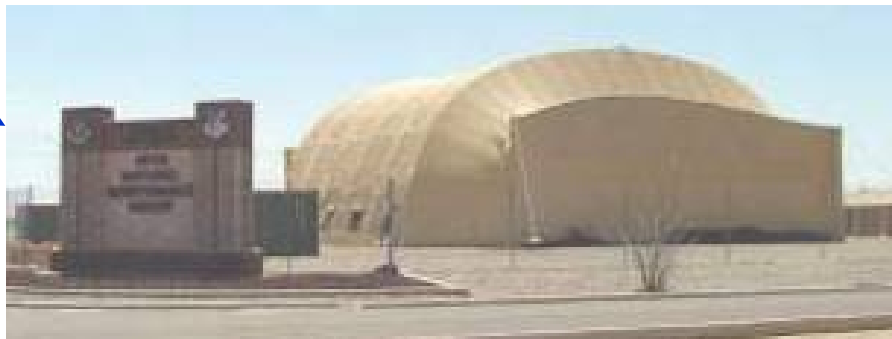
Technology Transitions



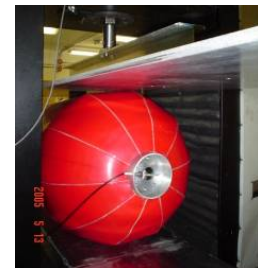
STO: Large Area Night Maintenance Shelter - 30' span



AF Large Shelter System



DTO: Wide Span Shelter – 85' span



MC High Speed Vessel Fendering System

JOINT COMMITTEE ON TACTICAL SHELTERS (JOCOTAS)

Significant Accomplishments by Members in FY 04

- Center of Excellence for Inflatable Composites
- Nurtured Broad SBIR Program
- Transitioned Photovoltaic Technology to Commercial Market
- Fielded a 15-Shelter Air Operations Center for OIF
- Fielded 200+ Cargo Bed Covers
- Fielded 6 CBPS to OIF, 52 to Korea
- Executed \$200M+ Production Softwall Shelter Contracts
- Provided Full Spectrum Support to OEF/OIF

JOINT COMMITTEE ON TACTICAL SHELTERS (JOCOTAS)

Summary

- JOCOTAS has brought broad shelter community together
 - 4 Services, DLA, developers, requirement/user reps
 - Tech base, integrators, testers, buyers
 - Industry: rigid wall, soft wall, ancillary equipment
- Standard Family / DOD joint use have saved millions of \$
- Will continue joint coordination, collaboration, and cooperation