

JPEO-CBD

Joint Program Manager Information Systems (JPM IS)

Program Overview

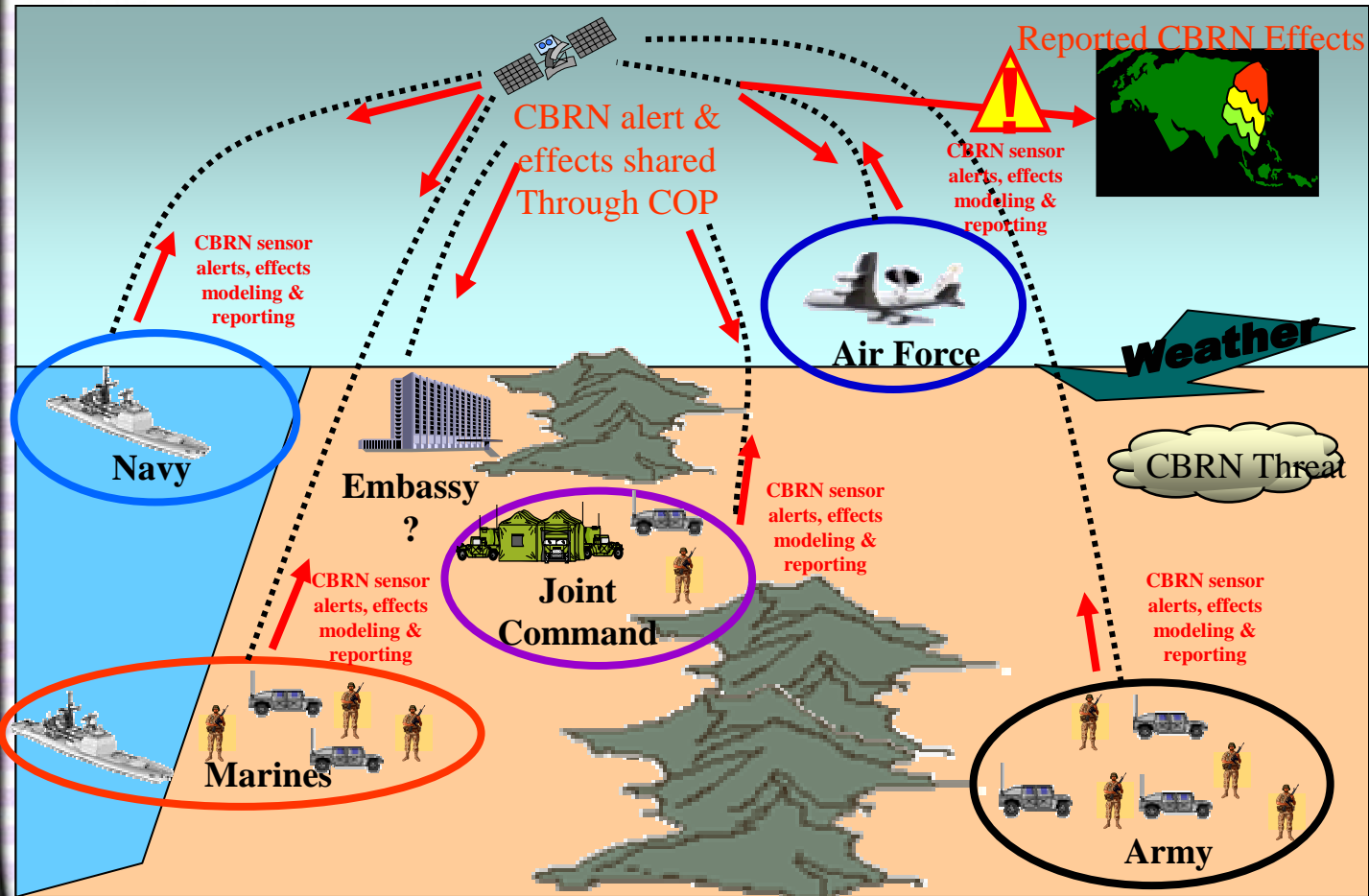
CAPT Tom O'Keefe
Joint Program Manager
(858) 537-0120
Thomas.O'Keefe@navy.mil

Joint Future Operational Capabilities

- **Principle Capabilities:**
 - Information Systems is ranked # 2
- **Operational Capabilities**
 - Battlespace Information Management is ranked # 1
 - Battlespace Analysis and Planning is ranked # 5
- **Enabling Capabilities**
 - Real time visualization of the Battlespace is ranked # 1
 - CBRN Analysis and Planning tools is ranked # 3

Shaping The Battlespace

JPM IS Products: Operationally employed at all levels of Command



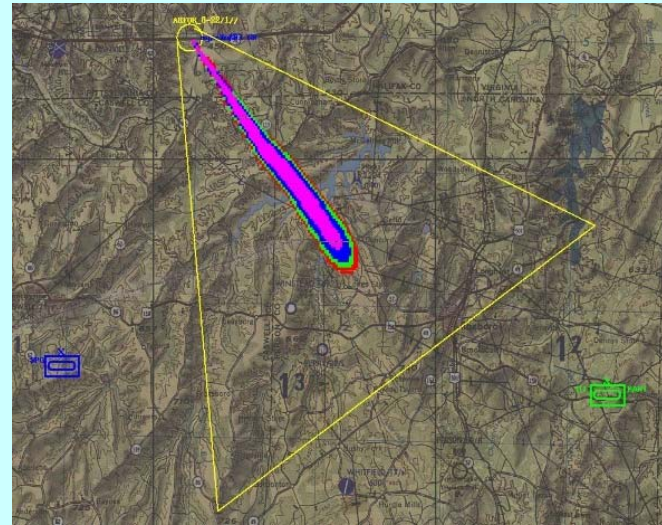
Supports

- Strike Planning
- Missile Defense
- Consequence Management
- Force Protection

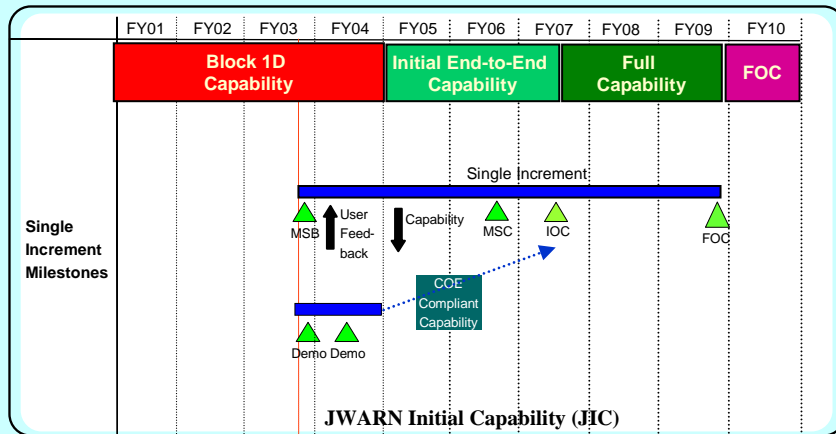
Joint Warning and Reporting (JWARN) Program Overview

DESCRIPTION

- JWARN is an ACAT III (Sentinel and Oversight Program) information system that allows for the networking and interface of NBC sensors, mission application software tools, and C4ISR systems
- Single Increment will integrate Block I capabilities into specified operational level service C4ISR systems that will provide an integrated communication architecture between C4ISR systems and NBC sensors
- Single Increment production will provide a JWARN Initial Capability (JIC) to elicit Warfighter feedback and expedite system development



SCHEDULE



REQUIREMENTS

- **Single Increment:**
 - Combines requirements of Blocks II and III
 - Application support for MCS, AFATDS FBCB2, C2PC, GCCS, GCCS-M, GCCS-A, and GCCS- AF
 - COE Level 7
 - DODIIS
 - Automated sensor interfaces for M8A1, M21, M22, IPDS, ADM 300, AN/VDR2, JBPDS

JWARN Program Status

- **JWARN Bik II MS B achieved 11 July 2003**
- **JWARN contract award announced**
 - Northrop Grumman IT (Orlando) prime developer
- **JWARN Post-Award Conference and System Requirements Review held in Orlando 12-15 August**
- **JWARN Initial Capability (JIC) draft development plan completed**
- **PM Guardian Support**

JWARN Business Opportunities

	<u>Time Period</u>
JWARN Initial Capability Development <ul style="list-style-type: none">– SBCCOM has the lead	FY 04
JWARN GUI Development <ul style="list-style-type: none">– NGIT has the lead– Leverage JEM and JOEF efforts	FY 04
JWARN Data Management <ul style="list-style-type: none">– JPM IS has the lead– Leverage JEM and JOEF efforts	FY 04
ATD/JWE Events <ul style="list-style-type: none">– JPM IS has the lead– Wireless Technologies– SW hosting and configuration issues	FY 05 – FY 06

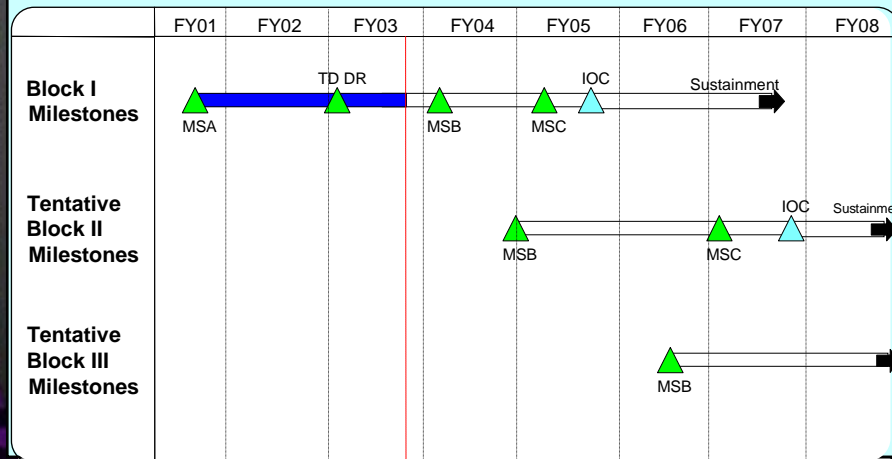
Joint Effects Model (JEM) Program Overview

DESCRIPTION

- JEM is an ACAT III Modeling & Simulation Program that will provide a single, validated capability to predict the transport and dispersion of CBRN / TIH events and their effects
- JEM will be accredited for all uses currently supported by the three interim accredited DoD S&T Hazard Prediction Models
- JEM will be integrated with service Command & Control Systems



SCHEDULE



REQUIREMENTS

- **Block I:**
 - Integrate all current capabilities of VLSTRACK, HPAC, and D2PUFF
- **Block II:**
 - Urban effects modeling
 - High altitude missile intercept effects modeling
 - Weather effects above 20 km and precipitation
 - Improved transport and diffusion methodologies
- **Block III:**
 - Waterborne Hazards
 - Contagious Disease Modeling
 - Complex structures
 - Building interiors
 - Human performance degradation

JEM Program Status

- **Block I**
 - System Architecture development
 - Source Code transition
 - Virtual Prototyping with Warfighter / Users
 - Identification of Authoritative Data Sources
 - Development of Working Prototype for Block 1: Initiated June 03
 - Acquisition documentation development for MS B

- **Block II**
 - Sources Sought announcement to be published on FEDBIZOPS
 - Initiate 12 month technology transition cycle
 - Coordinating with DTRA for S&T needs

- **PM Guardian Support**

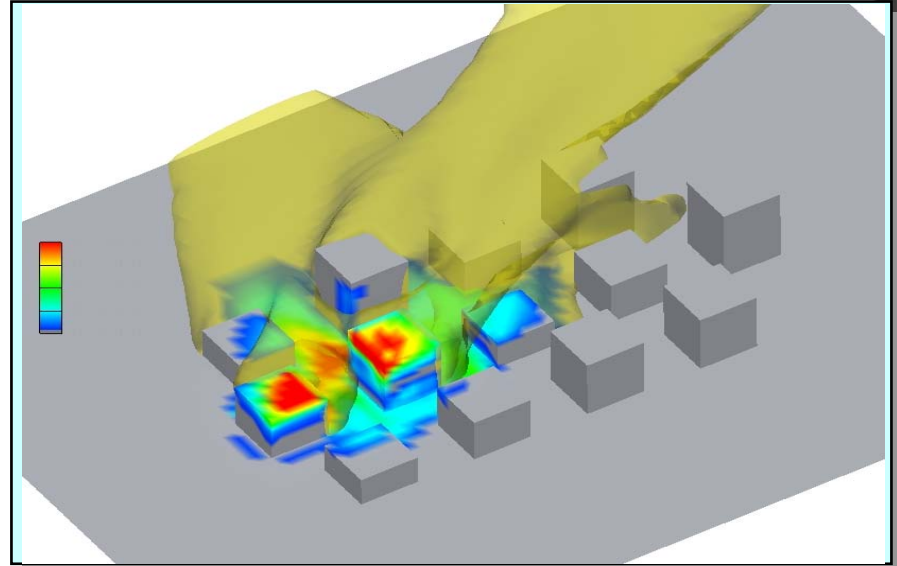
JEM Business Opportunities

	<u>Time Period</u>
Sources Sought Announcement (Block 2 capabilities)	1QFY04
BAA for System Development & Demo (Block 2)	2QFY04
RFP for System Integration (Block 2 and 3)	2QFY04
Sources Sought Announcement (Block 3 capabilities)	2QFY05
RFP for System Development & Demo (Block 3)	2QFY06

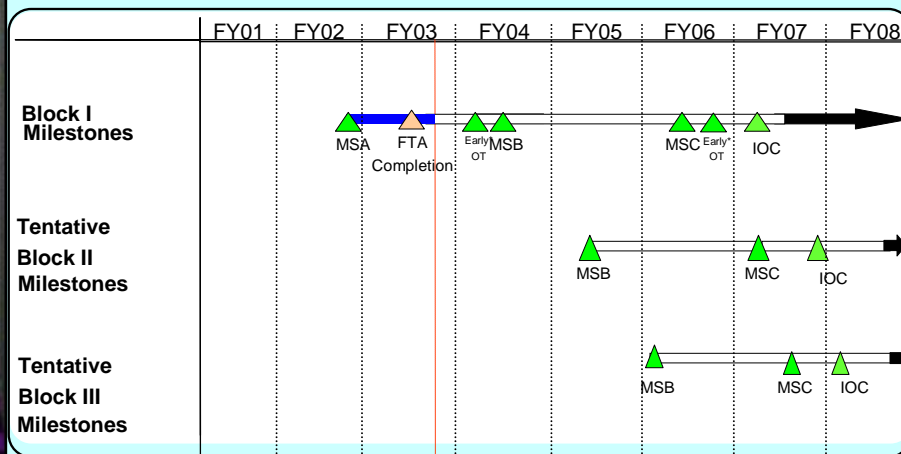
Joint Operational Effects Federation (JOEF) Program Overview

DESCRIPTION

- JOEF is an ACAT III Modeling & Simulation Program that will provide the Joint Warfighter a model based CBRN decision support information system that will:
 - Estimate hazardous effects on personnel and operations
 - Support advance and operational planning
 - Integrate with other CBDDP models
 - Deploy on C2 systems of all services



SCHEDULE



REQUIREMENTS

- **Block I:**
 - Assess effects on airports of debarkation
 - Incorporate medical requirements
- **Block II:**
 - Assess effects on sea ports of debarkation
- **Block III:**
 - Assess effects on land
 - Assess effects on mobile
 - Assess effects on littoral forces
- **Block IV**
 - Provide a full combat model for deliberate planning and operational use

JOEF Program Status

- **Transitioned Technology Assessment from FTA to SE IPT**
 - Evaluation report covered 25 models
 - FTA Report recommended technologies for JOEF
 - Initial Conceptual Model completed and given to SE IPT
- **Using existing DTRA and AFRL contracts for Prototype development**
- **AoA in progress**
- **Use cases developed**
 - Used to address KPPs in ORD/CDD
 - Test Conceptual Model
 - Test Prototype
- **CONOPS in Review**

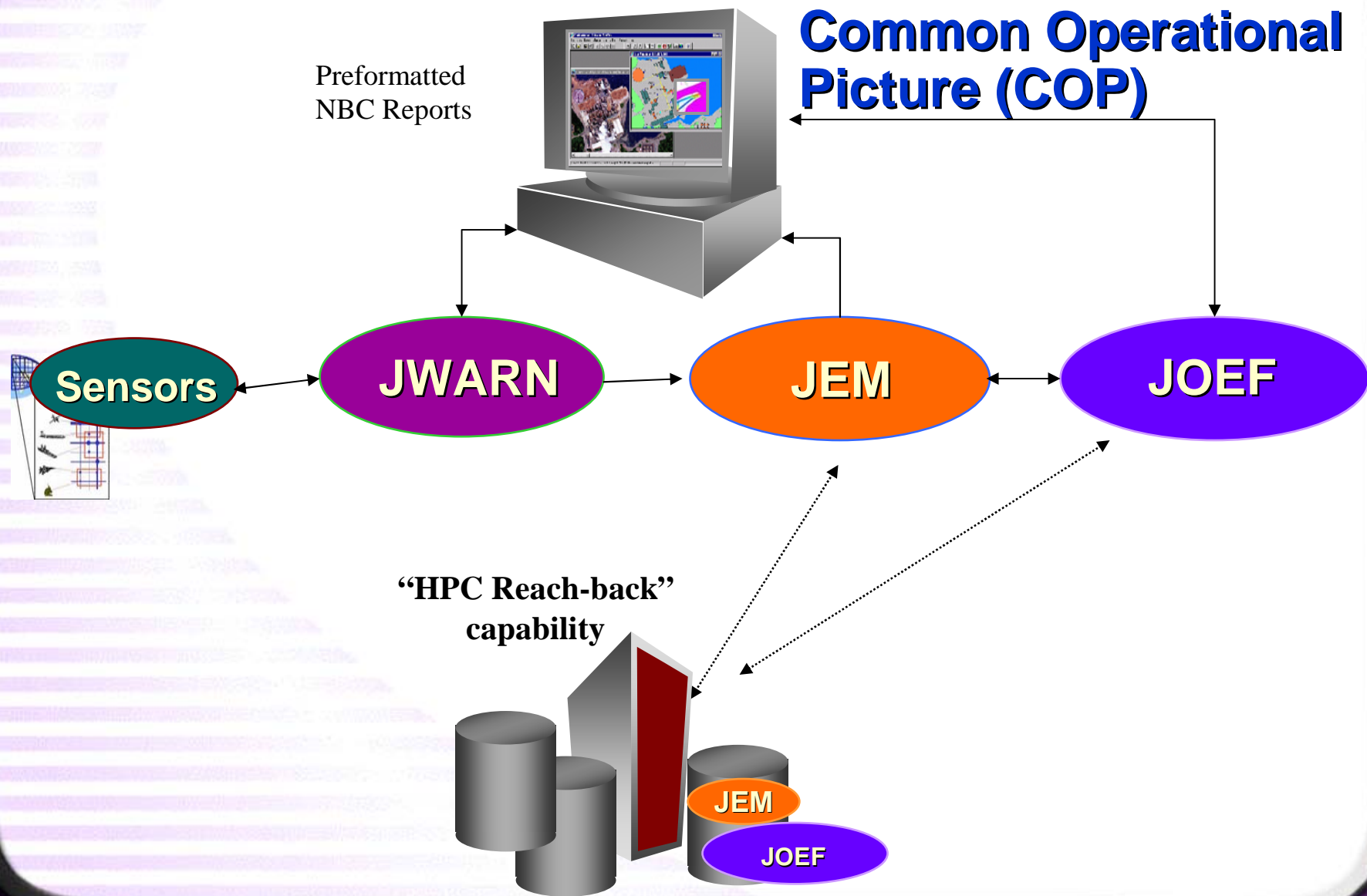
JOEF Business Opportunities

**RFP for System Development
& Demo (Block 1)**

2QFY04

JPM IS - Program Overview

End-to-End Capability



JPEO-CBD



**JPM IS
Software Support Activity (SSA)**



SSA Elements

- Requirements Engineering
- Enterprise Architecture
- Data Management
- Configuration and Resource Management
- Integration and Testing
- Quality Assurance
- Security
- Logistics
- Help Desk
- Standards, protocols, and Human Systems Interface (HSI)
 - Assistance building C4ISP, etc.

SSA Initial Focus Areas

- Requirements Engineering
- Enterprise Architecture
- Data Management
- Configuration and Resource Management
- Integration and Testing
- Quality Assurance
- Security
- Logistics
- Help Desk
- Standards, protocols, and Human Systems Interface (HSI)
 - Assistance building C4ISP, etc.

SSA Business Opportunities

Enterprise Architecture

- Define existing software architectures employed across JPEO CBD
- Maintain a configuration managed database of current architectures
- Review current architectures to determine compatibility/adaptability

Data Management

- Establish consistency of CBRN Data Schema, Data Model and XML Data Exchange between JEM, JOEF, JWARN
- Coordinate C4ISR/Combat Support Interoperability with Joint Programs
- Reconcile Legacy Data and Systems Analysis model inconsistencies
- Identify Authoritative Data and "Gaps" Meta Data Registration consistent with MID 905 and Supplemental Guidance

SSA Business Opportunities

Integration and Testing

- Provide JPEO with “one-stop shop” for C4ISR systems integration
- Provide centralized simulation support capability for system test and evaluation
- Provide consistent processes and guidance to JPEO CBD programs for conducting:
 - Model accreditation
 - Data certification
 - IV&V
- Coordinate and consolidate software operational and demonstration tests across JPEO CBD where appropriate

SSA Business Opportunities

Help Desk

- Provide centralized 7/24 support for all JPEO CBD developed software applications
 - Eliminates need and associated costs for multiple help desks
- Provide common trouble reporting and tracking software
- Use JWARN lesson learned: warfighter prefers one POC for help desk

Standards, Protocols and Human Systems Interface

- Ensure that all JPEO CBD GUIs have a common look, feel and functionality
- Ensure consistent protocols, data schemas and open system standards are employed by JPEO CBD programs when practical
- Work with enterprise architecture team to coordinate implementation of standards